



EASY MULTI DISPLAY

USER GUIDE
version 2



Table of contents

ABOUT EASY MULTI DISPLAY.....	4
Description.....	4
Benefits.....	4
System requirements.....	4
GETTING READY TO USE EASY MULTI DISPLAY.....	5
How to download Easy Multi Display ?.....	5
How to install Easy Multi Display ?.....	7
How do i update Easy Multi Display ?.....	14
How do I uninstall Easy Multi Display ?.....	15
How to activate Easy Multi Display.....	18
USING EASY MULTI DISPLAY.....	21
The configuration of Easy Multi Display.....	21
The shortcut bar.....	26
Remote control.....	27
Screen recorder.....	29
Software configuration.....	30
Planning.....	31
Text message.....	32
Configuring URL parameters.....	33
Easy Multi Display shortcuts.....	36
FREQUENTLY ASKED QUESTIONS.....	37
Hardware.....	37
System requirements.....	37
Which cables go to the television?.....	38
How much does the complete Easy Multi Display solution cost?	39
Software.....	40
Can I display the same image in several shops?.....	40
How to display free messages?	40
Can I display several videos one after the other?.....	41
How to display the day's weather?	41
How do I display my promotions?	42
How to scroll vertically on your website?	43
How do I post a YouTube video?	44
How do I scroll through my photos?	45
How to plan changes during the day?	46
What is a software maintenance contract?	47
What is EMD's maintenance contract?	47
What if I don't sign the maintenance agreement?	47
What are the main security risks of cloud computing?	47
Why do we offer two different video players?	49
VideoLAN Client (VLC)	49
Windows Media Player (WMP)	49
Why do we offer two different browsers?	50
Can I use my laptop?	51
Which graphics card do I need?	52
Tips on the graphics card Video.....	53
What type of TV set can I use with EMD?	54
How to display your social networks on multiple screens?	56

How to broadcast on six screens with one monitor?.....	57
How to change the ratio of your videos?	59
How can I use the existing rj45 network to broadcast on several screens?	59
Where can I find royalty-free images and videos?	60
How to display Youtube, Vimeo and Dailymotion videos?	60
How to scroll a web page vertically and automatically?.....	61
How to display several websites per zone?.....	61
How to display air traffic information?.....	62
How to display traffic information?	63
How do I view my Google Slides presentations, documents and spreadsheets?	63
How to remove the Google Control Panel from your slides?	63
How do I configure network management with Easy Network?	63
How to position your screens correctly?	64
How do I view my Excel files?	66
Problems encountered	68
Display problem not launched	68
Problem with YouTube stream files	70
Problem during software installation	71
Problem with the size or position of web pages (Windows desktop still visible after launching EMD)	72
Why is my media pixelated?.....	73
Customer service	74
Customer service contact details	75

ABOUT EASY MULTI DISPLAY

Description

Easy Multi Display (EMD) is a French digital signage software developed in France and designed in England that allows you to display your media simultaneously on multiple screens. Depending on your licence, you can display up to 24 different media on six screens simultaneously.

Benefits

Easy Multi Display is suitable for small, medium and large businesses that want to display multiple media simultaneously. With Easy Multi Display, restaurants, fast food outlets and cafes can display their special offers and menu to entice their customers to eat in. Retailers have chosen Easy Multi Display to showcase their products and advertising campaigns; shopping centres use Easy Multi Display to sell their advertising space to retailers. But our software is also suitable for pharmacies, which can, for example, display the weather, promotional offers or educational videos to inform their customers. The fire brigade has also put its trust in us!

System requirements

In order to make the most of all the features of Easy Multi Display, please ensure that your equipment meets the following requirements.

- Operating system: Windows 10
- RAM: 8 GB
- Graphics card: we recommend one of these.

Matrox	Nvidia Quadro
--------	---------------

M9140	P620
-------	------

Website	Website
-------------------------	-------------------------

Prix : ~ 600€	Prix : ~ 200 – 300€
---------------	---------------------

Note: Most recent graphics cards will work for customers using only one or two screens, if you wish to use our software to stream media to four or more screens, please purchase a "Quad" graphics card or refer to the chapter "Which graphics card do I need?" and "Graphics Card Tips".

GETTING READY TO USE EASY MULTI DISPLAY

Simply download and install Easy Multi Display by following these few steps. You will be up and running in no time. However, if you encounter any problems while downloading or installing Easy Multi Display, please contact us as described in the chapter "Customer service contact details".

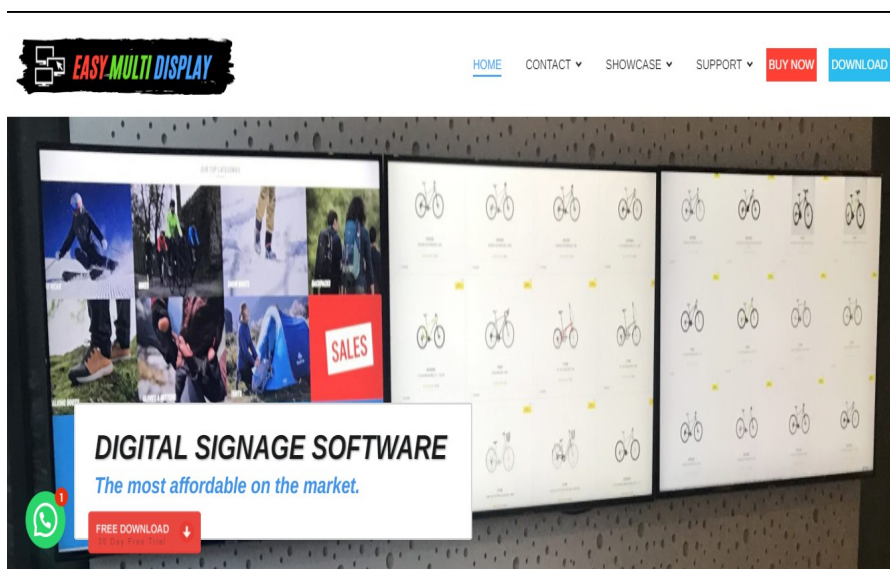
How to download Easy Multi Display ?

1. Use a web browser, such as Google Chrome, Mozilla Firefox or Opera to access the official Easy Multi Display website.

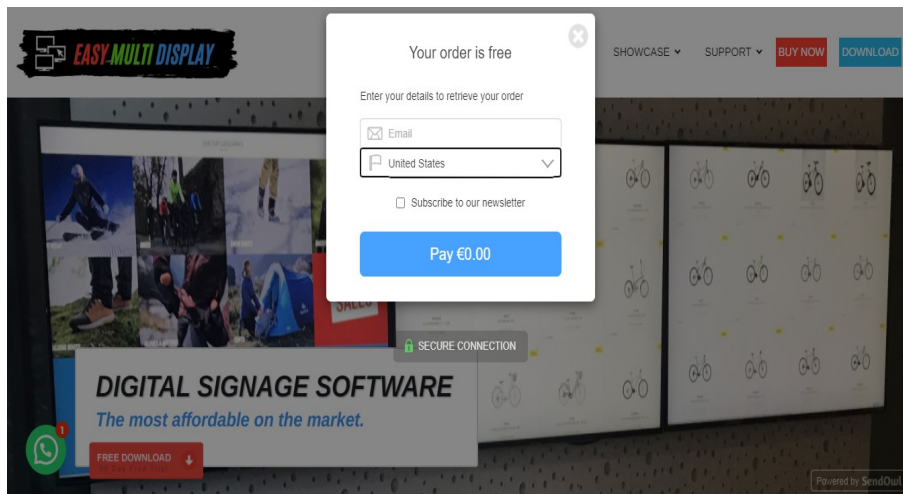
Note: If you are reading the digital version of this user guide you can click directly on the link below to access the official Easy Multi Display website. You can also copy this link into the address bar of your web browser.

www.easy-multi-display.com

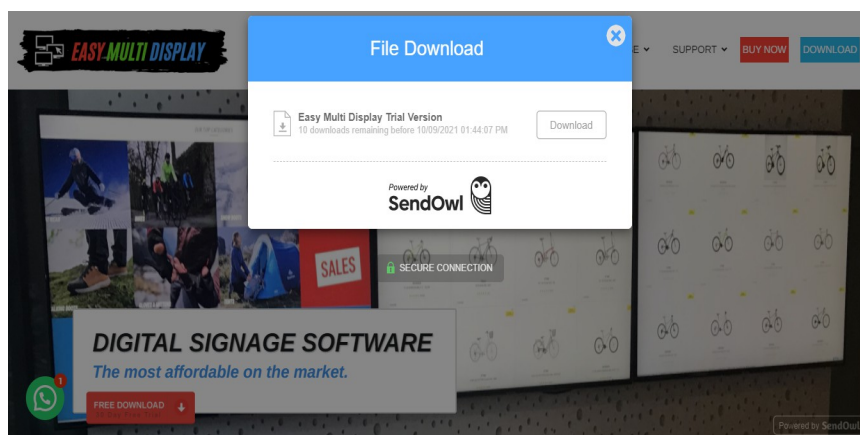
2. Click on the red button to download the trial version of the software.



3. A new window will open, inviting you to enter your e-mail adress, then select your country and click "continue".



4. After clicking on "Continue", a download link is displayed. Click on the button to start downloading Easy Multi Display.



5. A window appears, select a folder in which you want to save Easy Multi Display.



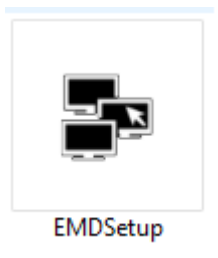
Congratulations, the download of Easy Multi Display is underway! Please wait!

How to install Easy Multi Display ?

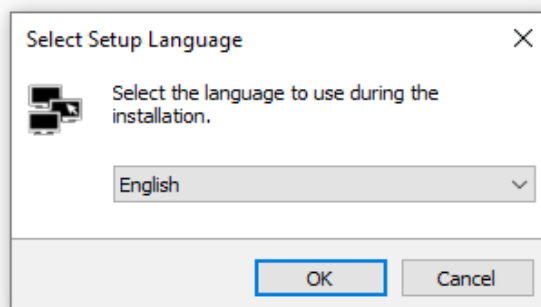
Please follow the instructions below to install Easy Multi Display.

Note: In order to install and run Easy Multi Display you will first need to download the software from our website. For more help on downloading EMD, please refer to the chapter "How to install EMD".

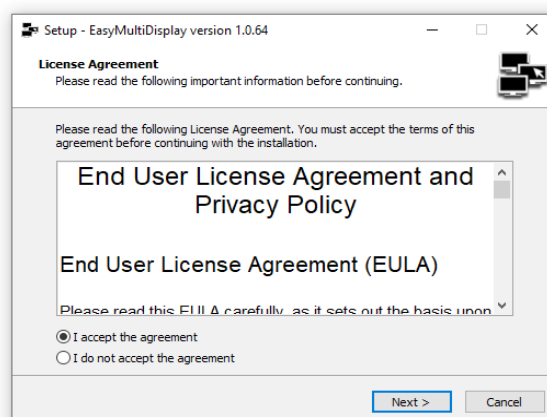
1. In Windows, find the previously downloaded "EMDSetup.exe » file.



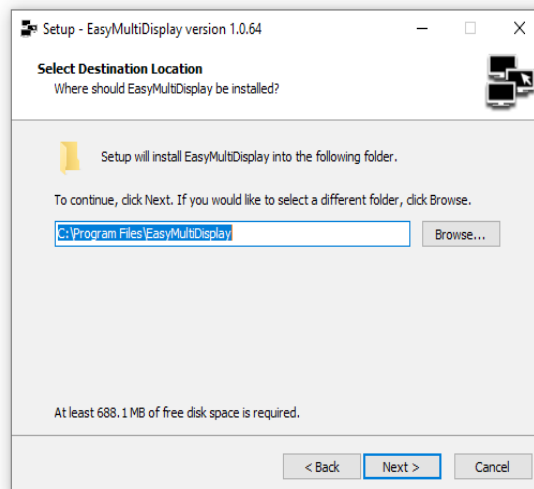
2. Double click on this icon to start the installation of EMD.
3. A Windows window will appear, choose your language.



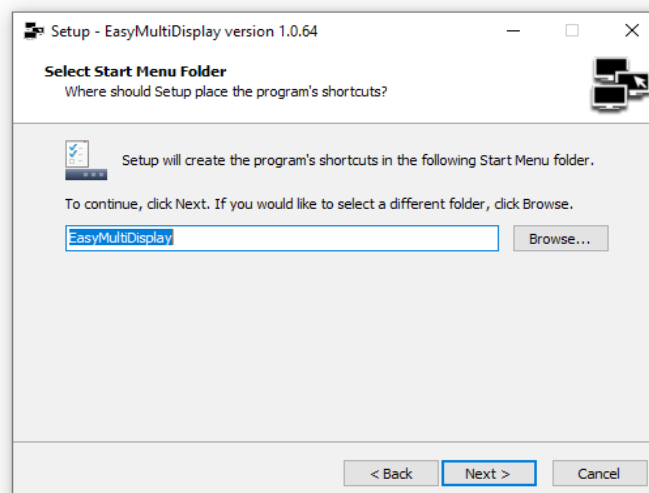
4. Click on "I understand and accept the terms of the licence agreement", then click on next.



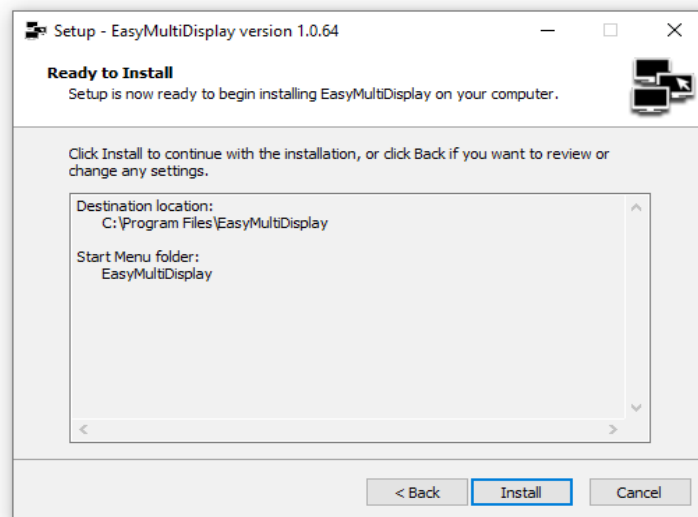
5. Choose the destination folder for the software, we advise you to leave the default folder (C:\Program Files\EasyMultiDisplay).



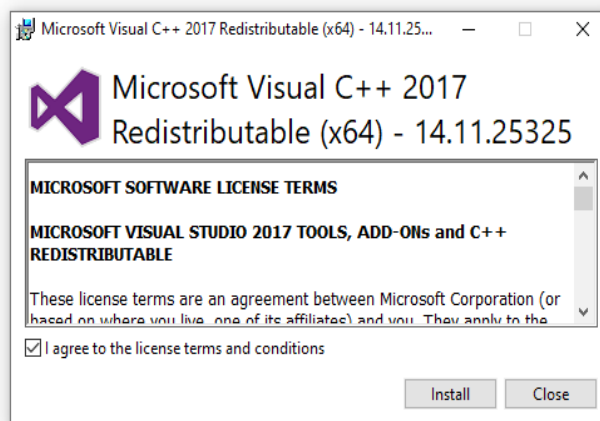
6. Select the folder in the start menu where you want to install EMD. We recommend that you install it in the default folder, then click "Next".



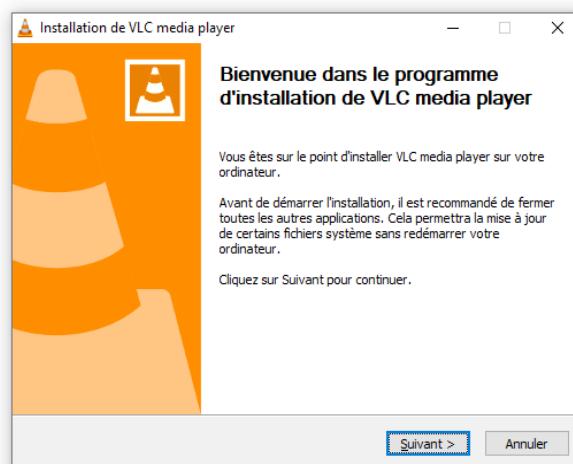
7. Check the installation folder and the start menu folder, then click "Install".



8. Easy Multi Display will start the installation. However, at the same time, the software will install two important programs for Easy Multi Display to work properly. Let's start by installing Microsoft Visual C++ by clicking on "I accept the terms and conditions of the license" and then click on "Install".



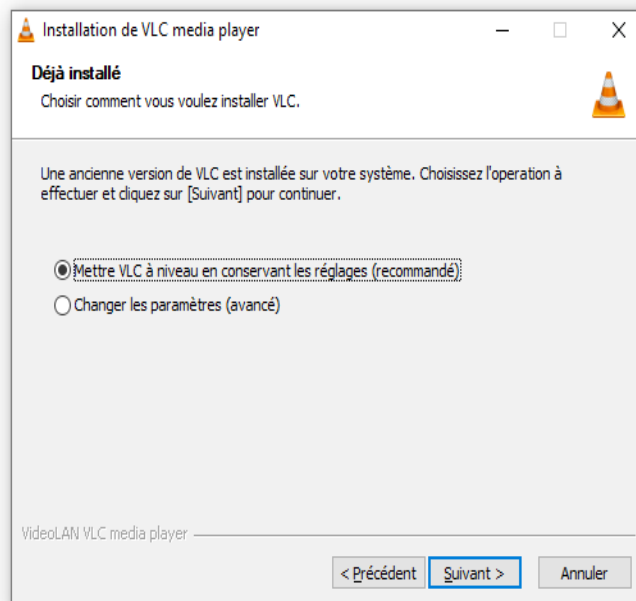
9. We now start the installation of VLC, click on "Next".



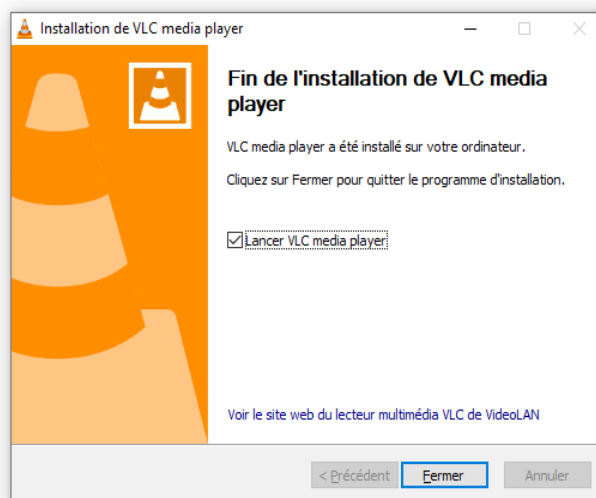
10. If you already have VLC installed on your computer, you have two options :

1. Upgrades VLC and keep the settings.
2. Change the settings.

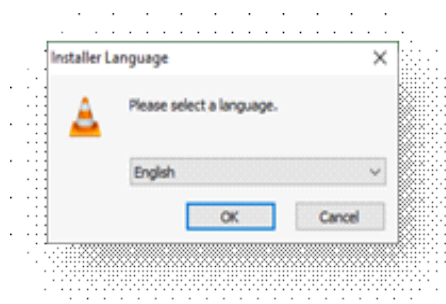
Once you have made your choice, click on "Next". VLC will be installed. If you do not have VLC, please go directly to step 12.



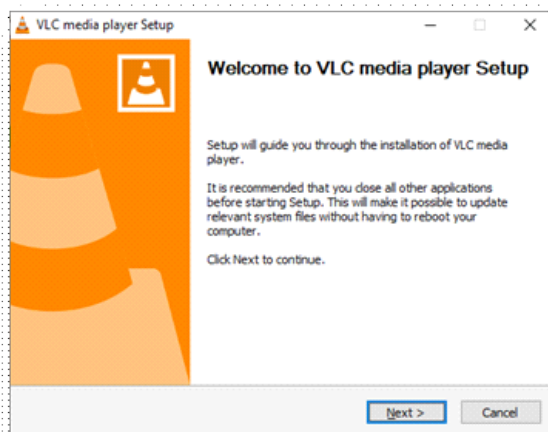
11. Clic on "Close".



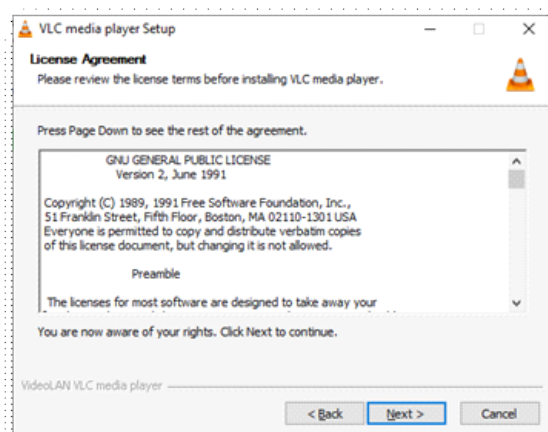
12. A new window will appear asking you to choose the language in which VLC Media Player is installed. Select your language and click on "Ok".



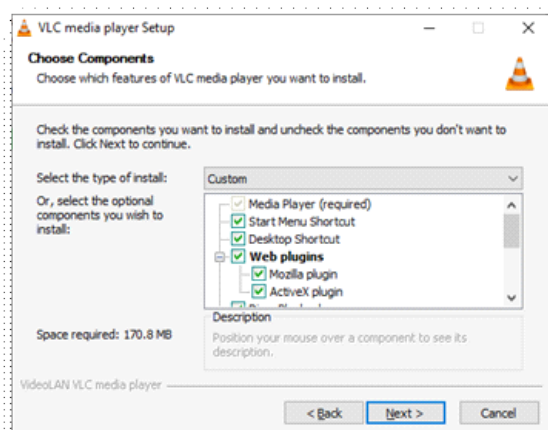
13. The installation of VLC Media Player will start, click on "Next".



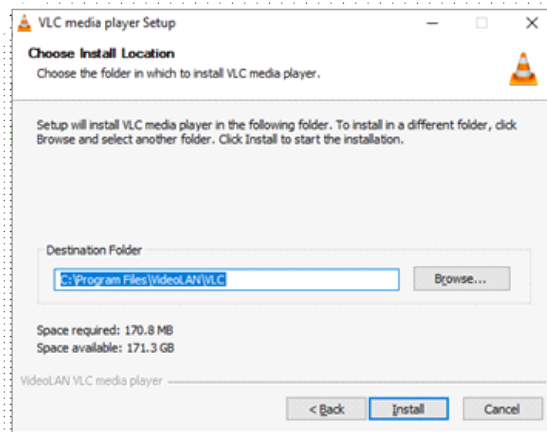
14. Click on "next" to accept the terms of use of the software.



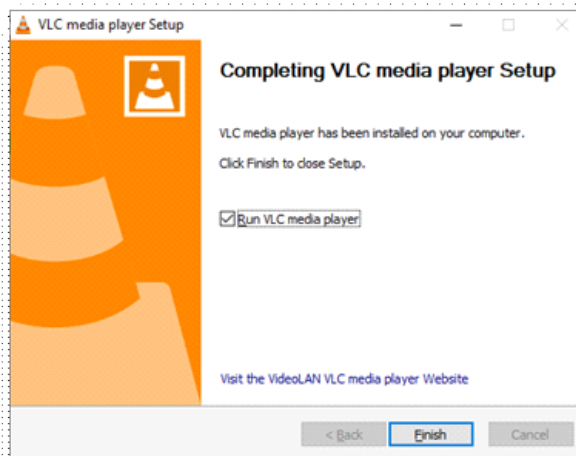
15. Please leave the default setting and click on "Next".



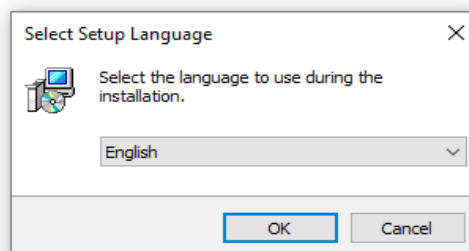
16. Choose the VLC Media Player installation folder and click on "Install".



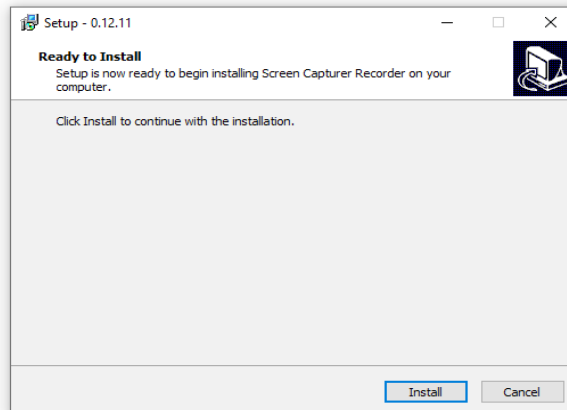
17. Wait until the installation is complete, then click on "Finish".



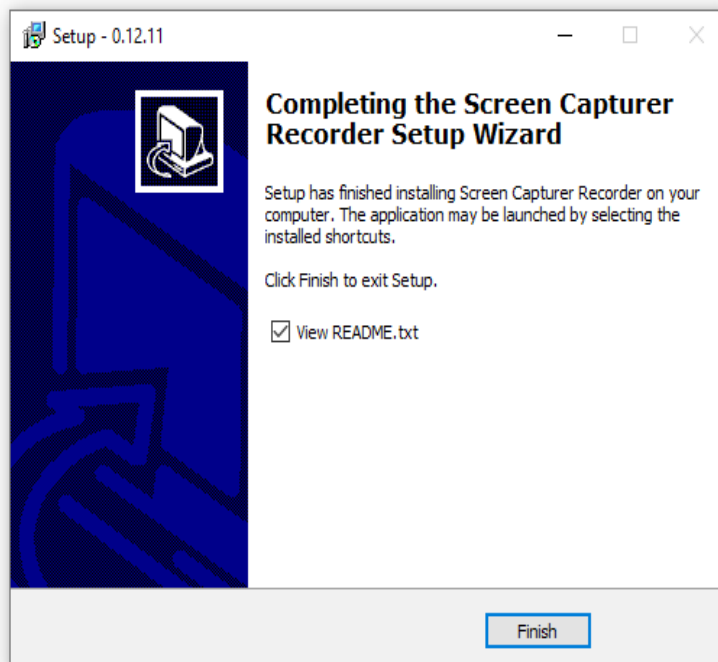
18. Once the installation of VLC Média Player is complete, the Screen Capturer Recorder software will be installed. Choose the language and click "Next".



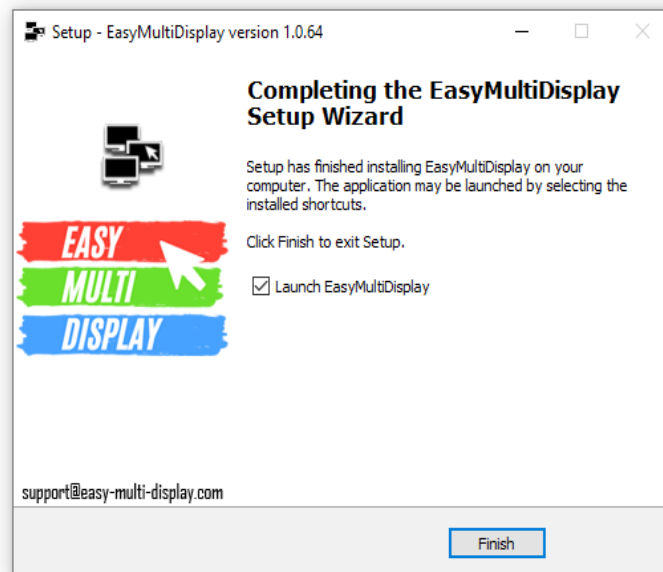
19. The installation of Screen Capturer Recorder will begin, click on "Install".



20. The software is installed, click on "Finish".



21. Then go back to the Easy Multi Display installation, choose "Yes, restart my computer now" and click "Done".

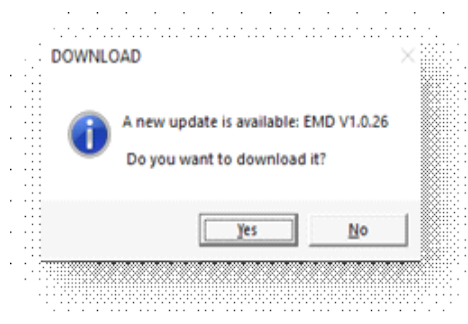


Congratulations, the installation of Easy Multi Display is complete!

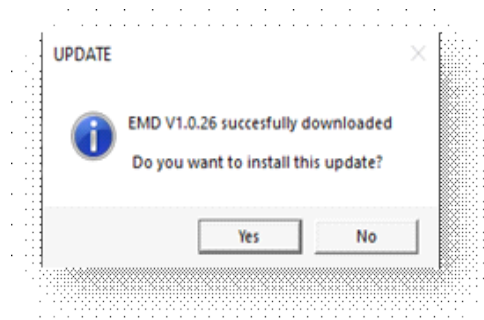
How do i update Easy Multi Display ?

Updating Easy Multi Display is very easy! If an EMD update is available, the software will suggest you to install it.

1. When prompted, click "Yes" to begin downloading the EMD update.



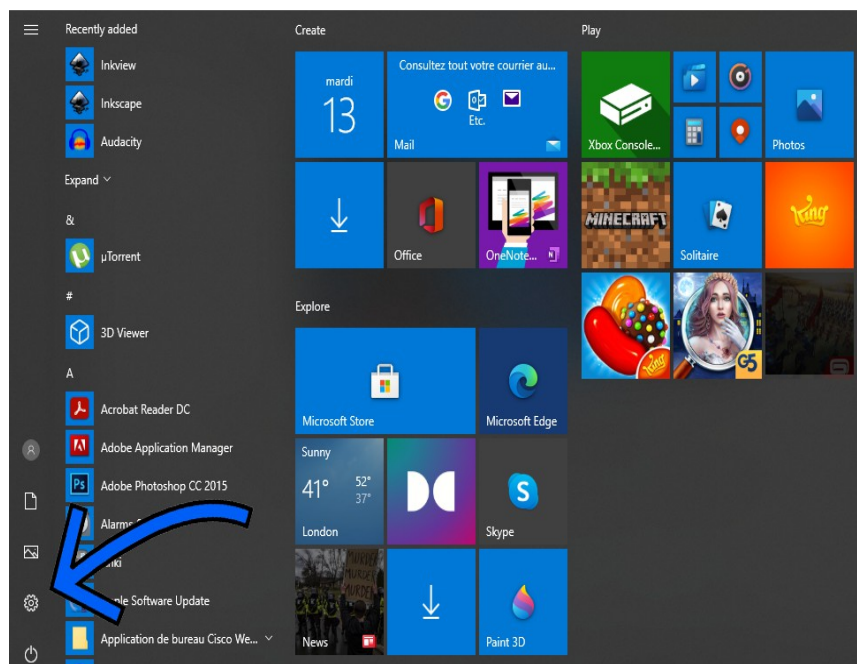
2. Once the download is complete, a second dialog box will appear asking you to install the update, click on "Yes".



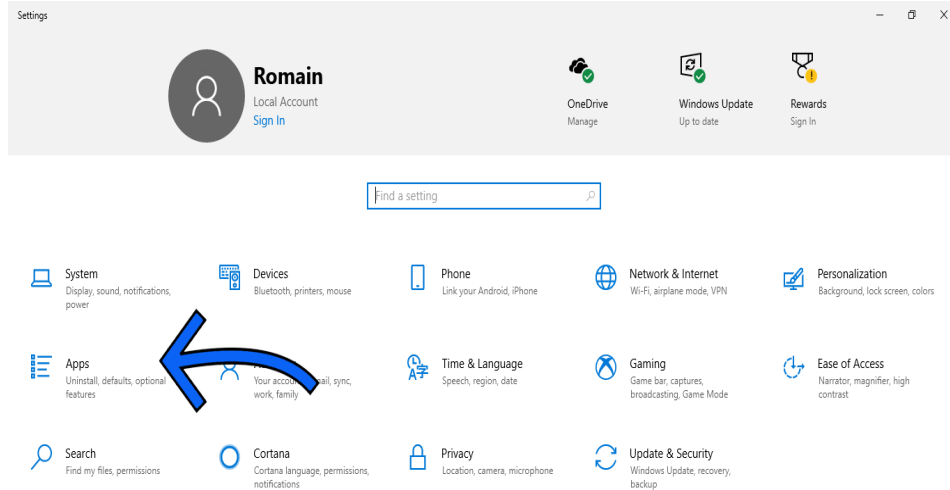
How do I uninstall Easy Multi Display ?

Please follow the instructions below to start uninstalling Easy Multi Display.

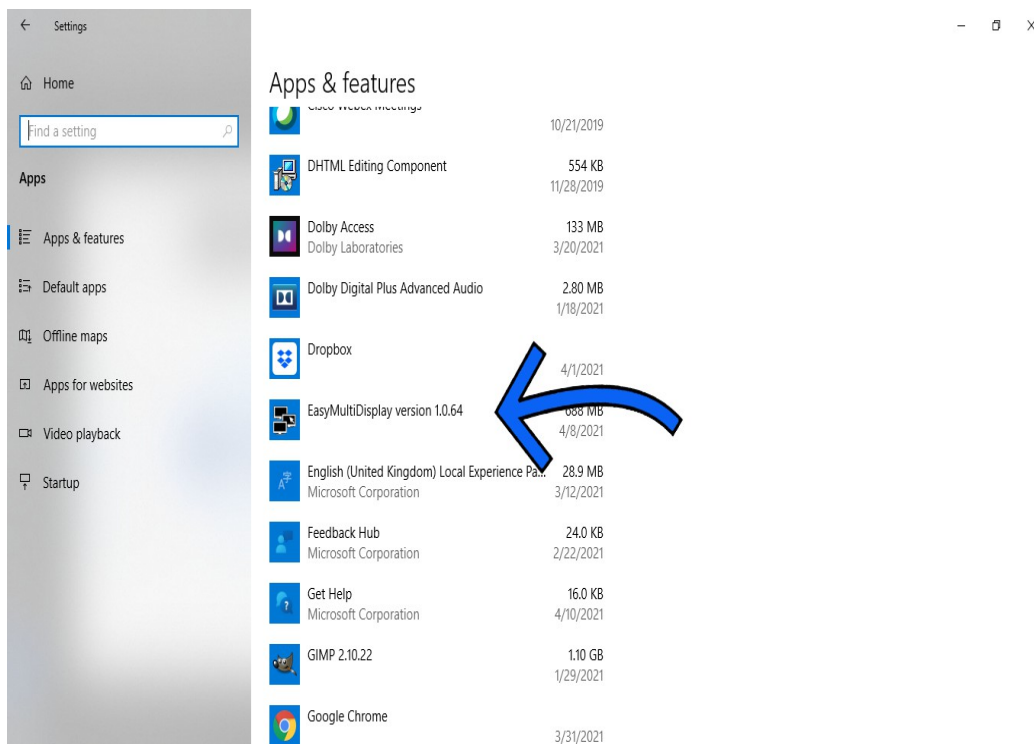
1. From your desktop, open the Windows start menu and click on "Settings".



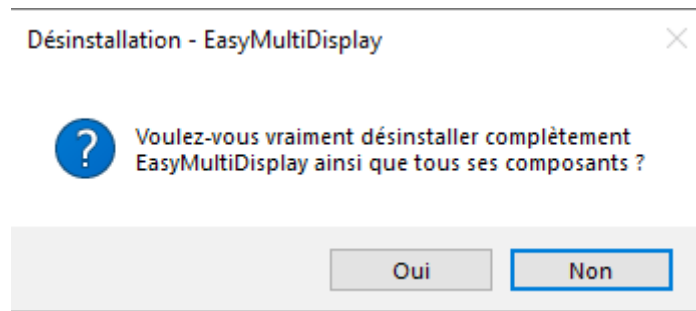
2. A new window will appear, click on “Application”.



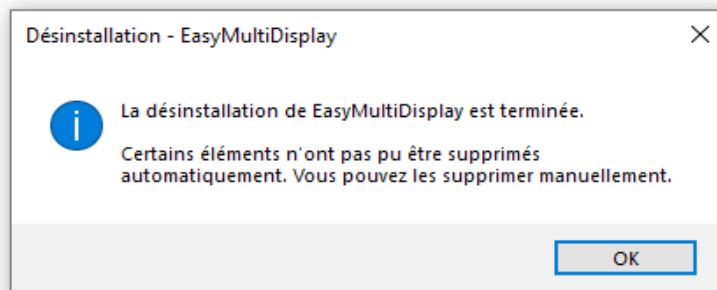
3. Look for Easy Multi Display in the list and click on “Uninstall”.



- Windows will display a window asking you: "Are you sure you want to uninstall Easy Multi Display and all its components completely?" Click on "Yes".

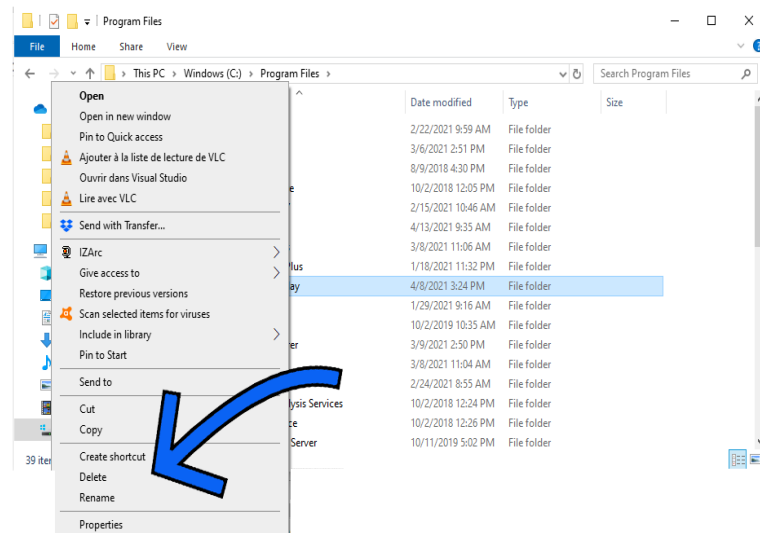



- Easy Multi Display is removed. However, some items will have to be deleted manually.



- To remove the remaining items, go to the Easy Multi Display installation folder. The default path is: C:\Program FilesEasyMultiDisplay.

7. Locate the "EasyMultiDisplay" folder and click on the folder and delete it.

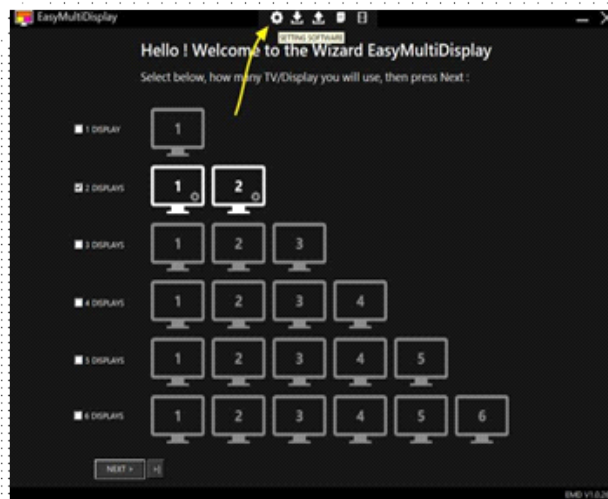


 Congratulations, Easy Multi Display is uninstalled!

How to activate Easy Multi Display

After purchasing an Easy Multi Display licence you will receive an e-mail containing your activation key. Please follow the instructions below to activate your software.

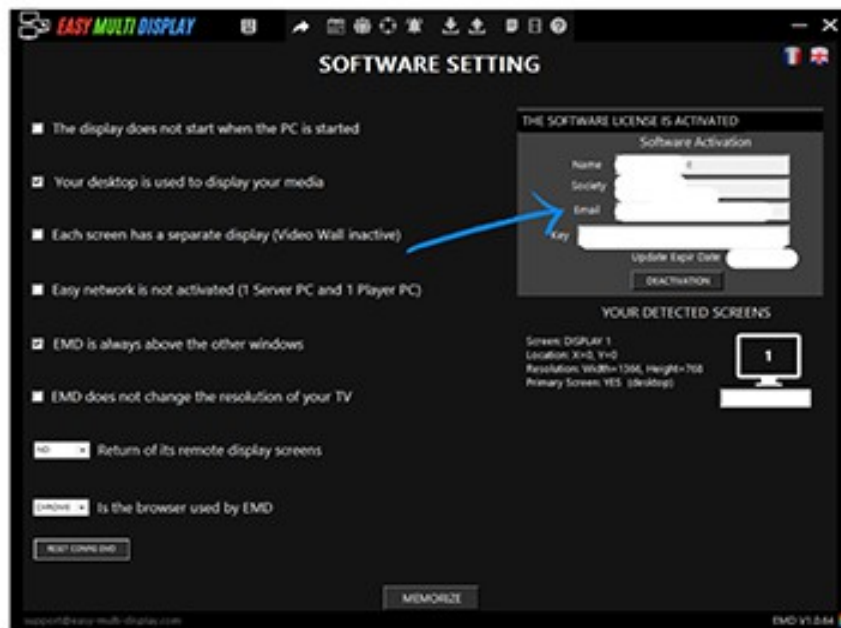
1. Click on the Setting Display icon on your desktop to open Easy Multi Display.



2. Click on the cog in the icon bar at the top of the software.



3. On the software activation page, please enter your name, company, e-mail address and activation key and click on "Activation".

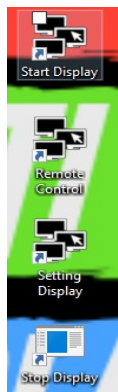


Note: If you want to remove Easy Multi Display from one computer and install it on another computer, please keep your name, company, e-mail and activation key and click on "Deactivation". This way you can use this information on another computer.

Please note: if you do not click on deactivation and delete the software from your computer, you will be required to contact us to recover your account.

USING EASY MULTI DISPLAY

Using EMD is very simple. Here are four icons that will help you use EMD.



Start Display: starts the last display configuration.

Remote Control: starts the configuration.

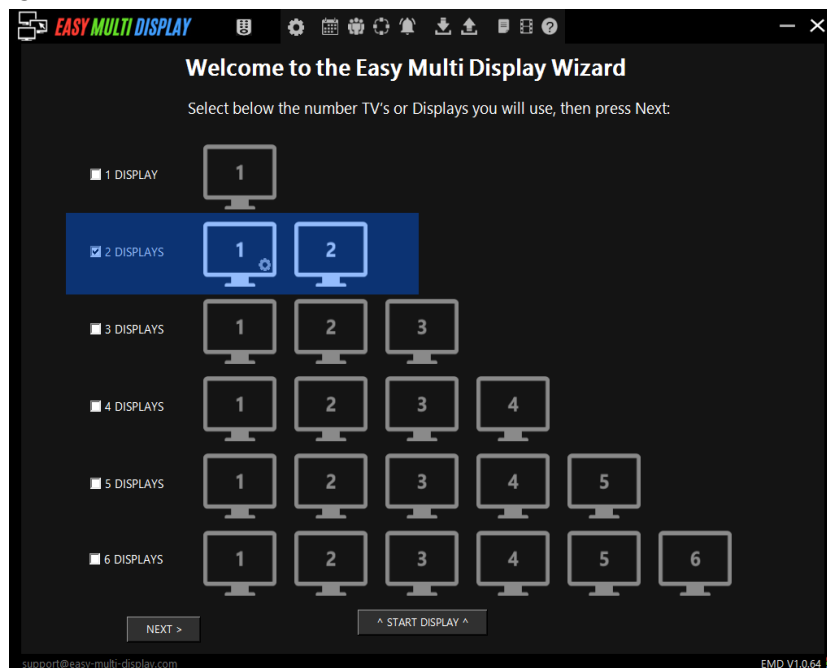
Setting Display: stops the current display.

Stop Display: stops the current display.

The configuration of Easy Multi Display

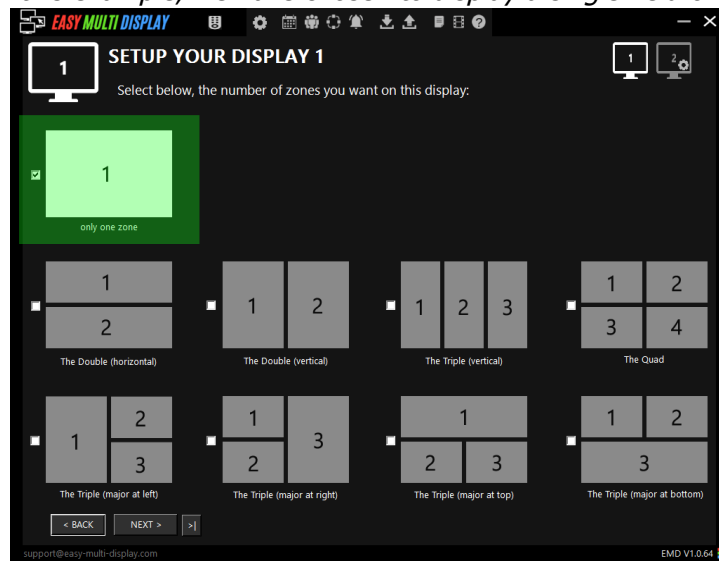
Start the Easy Multi Display configuration by double clicking on the "Setting display" icon on your desktop.

1. Select the number of screens to be used and click "Next". In this example we will set up two screens.

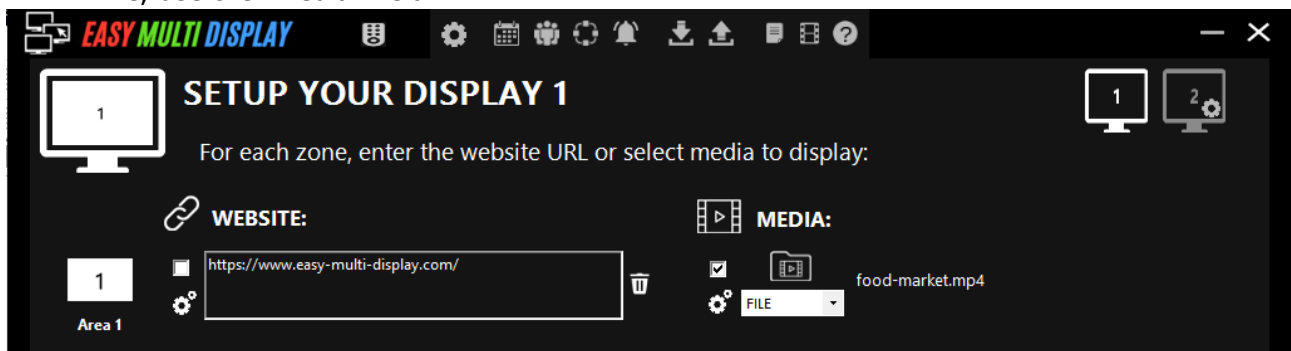


2. In this menu you need to select the display fields for your screen 1 and then click 'Next'.

In this example, we have chosen to display a single field on screen 1.



3. Now you can choose what you want to display on your screen number 1. You can choose a URL or media for each field.
4. If you wish to post your website, please enter your link in the "Website" field, for any other file, use the "Media" field.

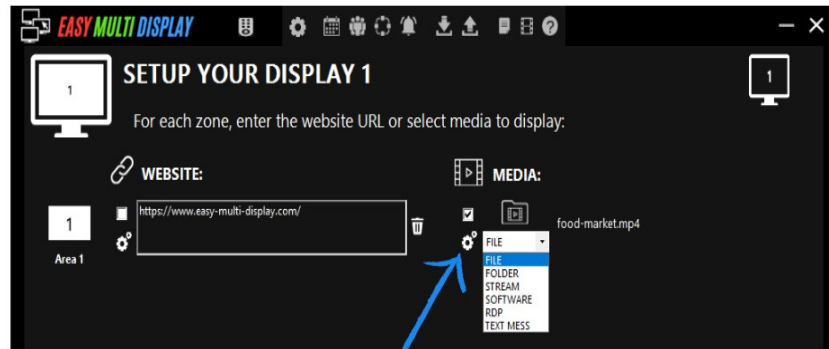


Note: if you want to display an online video site such as YouTube, Vimeo or Dailymotion, we strongly advise you to use the "Stream" option in the "Media" area in order to display the video in full screen and not to consume bandwidth each time it is broadcast.

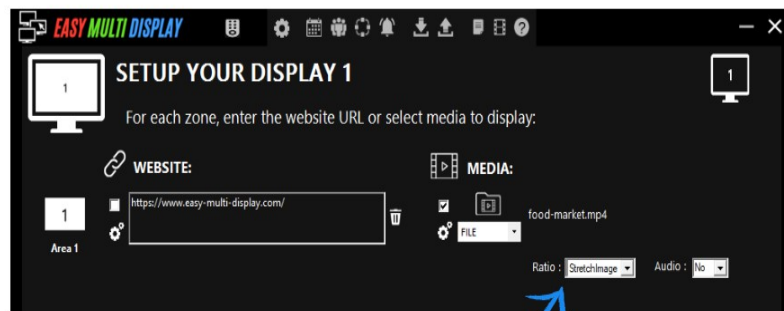
1. You can preview the current screen display by clicking on "Preview on your desktop" or "Preview on display 1". Once you are satisfied, click on "Next".

Tip: You can interrupt your preview by clicking on "Close" in the application or by pressing the "Escape" key on your keyboard.

Tip 2: You can also change the size of your images by clicking on the wheel on the left of the "Folder" or "File" menu. You will have various options to change the display of your image(s).



① Click on the cog on the left of "File".

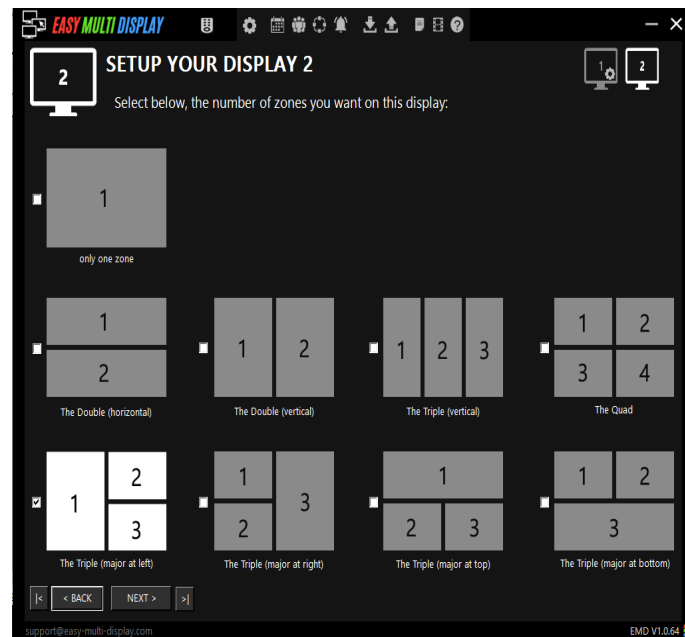


② Choose the format of your image or video.

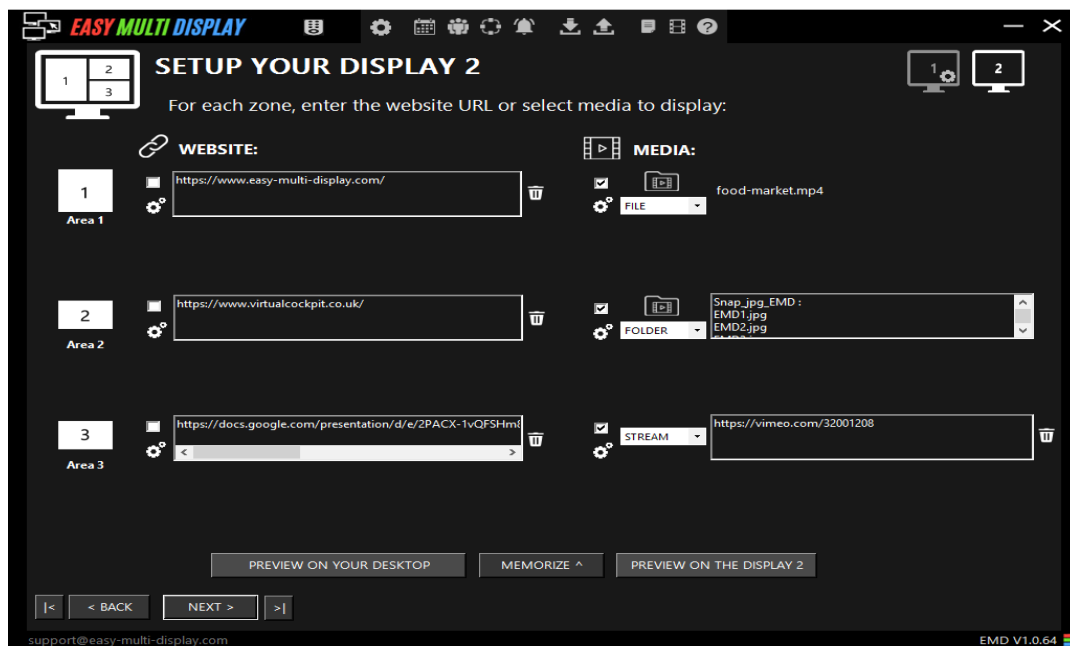
...Do the same thing if you want to display a folder.

5. Now you can select the number of fields for your second screen, then click "Next".

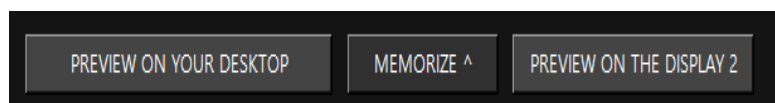
In this example, we will select three fields for our second screen.



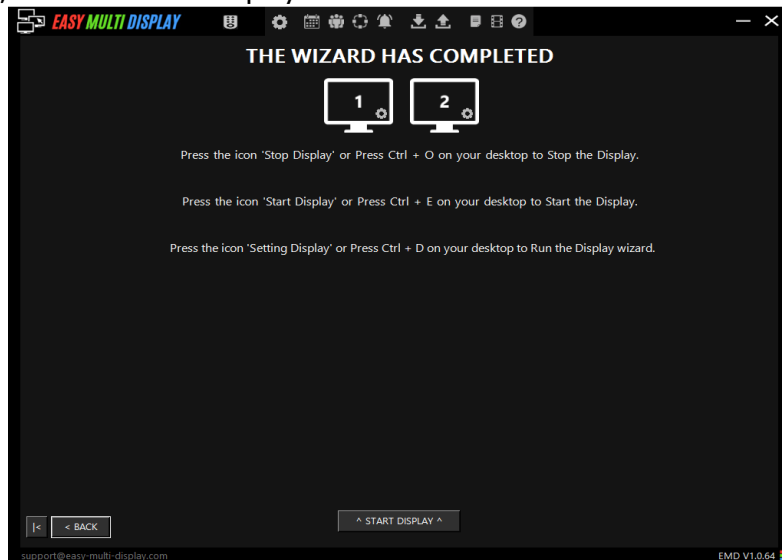
6. Now you can choose what you want to display on screen 2. You can choose to display a URL or media for each area. When you have finished setting up, click "Next".



The configuration of your screens is finished! Save your configuration by clicking on "Save" at the bottom of the window and then click on "Next".



In the last window, click on "Start Display" to start the broadcast!



Tip: Did you know that you can go back to the different steps of the Easy Multi Display configuration to change the areas and media to be displayed? Simply click on "back" to navigate through your configuration and modify it.

The shortcut bar



1	Remote control	Remote control configuration.
2	Configuration	General software configuration.
3	Planning	Schedules the release date of a configuration.
4	Users	(available soon).
5	Advanced network	(available soon).
6	Text messages	Configuration of text messages.
7	Open a display configuration	Open a previously created display configuration.
8	Save this display configuration	Save your current configuration.
9	User manual	Software user manual.
10	Video tutorials	Videos to help you use the software.
11	Help centre	F.A.Q. of the website.
12	Update	Software update.

The Easy Multi Display shortcut bar is dedicated to software updates, so the "Users" and "Advanced Network" icons (4 and 5) will be implemented in a future update of EMD. If you would like more information about these two features or other existing features, please refer to the "Customer Service Contact Information" section to contact us. We will be happy to inform you about the further development of the software.

Remote control

The EMD remote control allows you to navigate between your screen configurations. This will be useful if you want to change your configuration with a few clicks.



Note: you will not have access to the remote control if you have purchased the "One Screen" or "Standard" version of Easy Multi Display. If you wish to use the remote control, please.



Purchase the "Enterprise" license from our website or upgrade your current version.

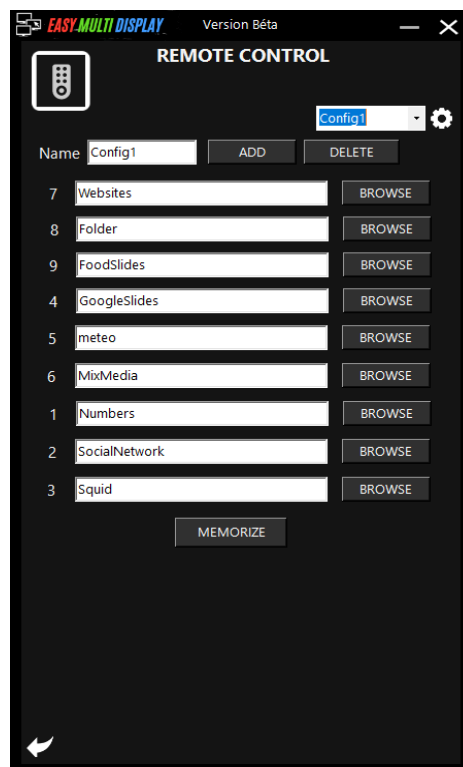
1	Reduces the "remote control" window.
2	Allows you to choose your PC.
3	Choose the configuration you wish to use.
4	Each number corresponds to a previously created display configuration.
5	Select the alert message to be displayed.
6	Choose the day and time to broadcast your display.
7	Record a video of your current broadcasts.
8	Switch to the basic mode of the remote control.

Below is a more complete description of the features of the Easy Multi Display remote control.

1: This option collapses the 'Remote Control' menu to show a moveable icon. Clicking on this icon will open the Easy Multi Display remote control menu.

2: This option allows you to choose the PC to be used with the Easy Multi Display remote control.

3: Allows you to choose the configuration you wish to use, this will allow you to display up to nine display configurations, by clicking on the cog, you will be able to add, modify or delete your configurations. Click on "Browse" and choose the display configurations you have previously created so that you can access them in a few clicks.



4: These are all your display configurations available in your configuration (here, the configuration is that of the SDIS). Each of these icons is a previously created display configuration, by clicking on one of these icons you can easily switch from one display configuration to another.

5 : This menu allows you to broadcast an alert message on one or more screens. You can create, customise and save your alert messages in the "Alert message" menu of the shortcut bar.

6: The "Sequence" menu allows you to program your display configurations so that they are displayed at a precise date and time, to do this, program the display in the "Planning" menu of the shortcut bar.

7: The Easy Multi Display remote control also allows you to capture video of your broadcasts.

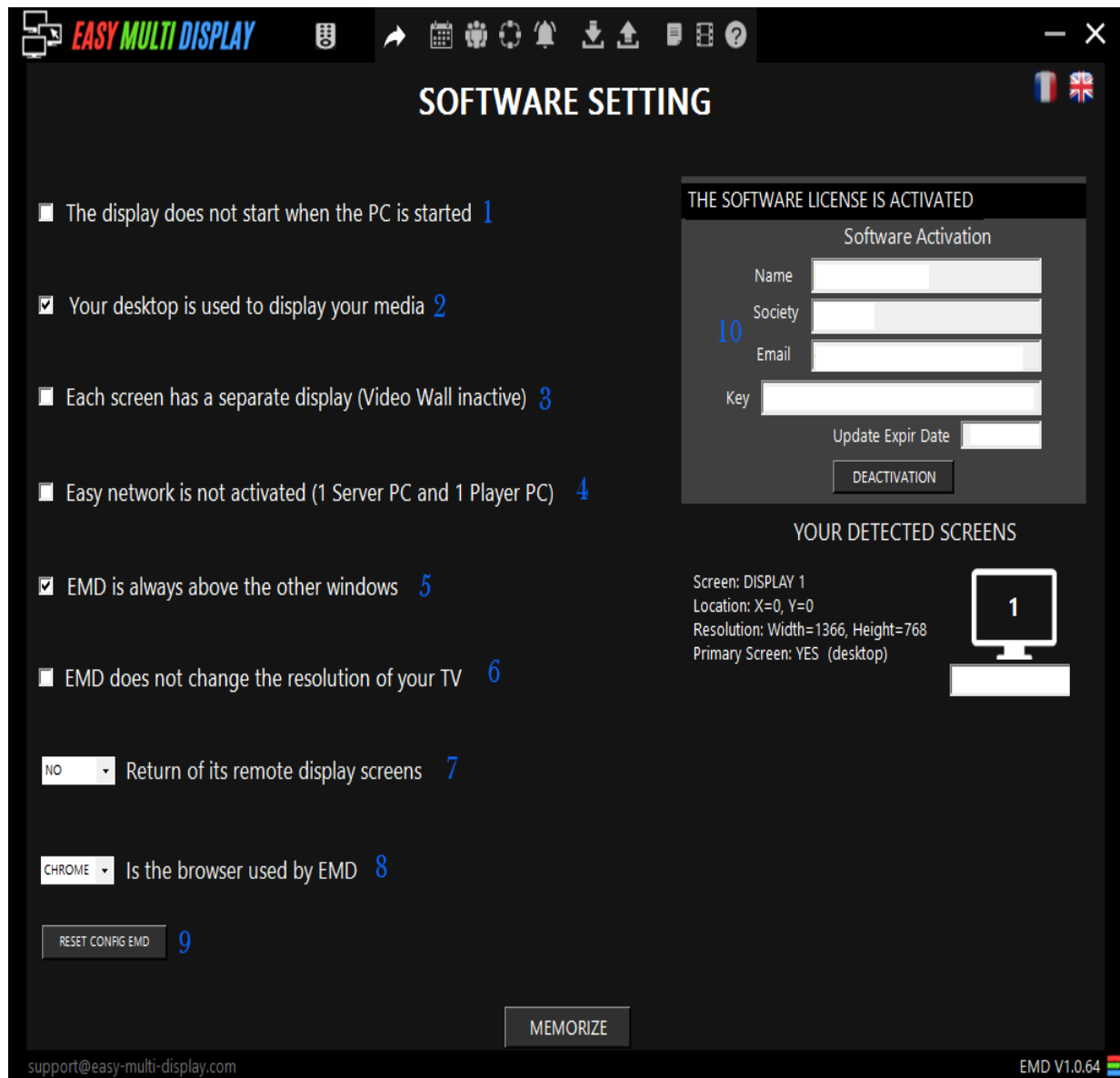
Screen recorder

The screen recorder is one of the most advanced options of the Easy Multi Display software, which allows you to record your broadcasts on video. This option is capable of recording one or more screens simultaneously.



1	Destination folder for your video captures.
2	Name of your file.
3	Date format of your file.
4	Number of screens to be recorded.
5/6	Height and width of your record.
7	Video codec to be used for recording.
8	Quality of your video recording.
9/10	Video resolution of your recording.
11	The captured video can be played back on a local network on another PC.
12	Record only the stream or the audio.
13	Saves the configuration of your recordings.
14	Starts recording your screen(s).
15	Location of your recorded videos.

Software configuration



1	Enable or disable launching the software when Windows starts.
2	If you only have one screen, the media will appear on that screen.
3	Activate or deactivate the "Video Wall" function.
4	Controls the PC remotely.
5	The EMD window will always be above the other windows.
6	Customise the resolution of your screens.
7	Return to your configuration on the top right screens in the "configuration" tab.
8	Choose the browser to be used to open websites in Easy Multi Display.
9	Reset your Easy Multi Display configuration.
10	Your licence information.

Planning

EASY MULTI DISPLAY

PLANNING

YOUR SEQUENCES

List of your recorded sequences

1 + ADD SEQUENCE

name_sequence1

- REMOVE SEQUENCE 2

Select the sequence to be modified

EDIT SEQUENCE

3 Name name_sequence1

4 Description Description

5 Mon. Tue. Wed. Thu. Fri. Sat. Sun.
☒ ☒ ☒ ☒ ☒ ☒ ☒

6 Configs Display Duration

7 List of your recorded configs display

Cowboy
Folder
FoodSlides
GoogleSlides
meteo

8 REMOVE

Select your configs display to include in this sequence

ADD ->
ADD ALL ->

List configs included in this sequence

Cowboy
Folder
FoodSlides
GoogleSlides
meteo

REMOVE REMOVE ALL

Select the display config to be changed

EDIT CONFIG

9 Name Cowboy

Hour 0 Minute 0 Second 30

DISPLAY

10 Broadcast name_sequence1

Default Broadcasting ConfigDisplay

11 ■ The sequences are not launched with your display

MEMORIZE

support@easy-multi-display.com EMD V1.0.64

1	Add a new sequence.
2	Delete a new sequence.
3	Give your configuration a name.
4	Give a description of your configuration.
5	Plan the release date of your configuration.
6	Choose between display time range and display duration.
7	All saved configurations are displayed here.
8	Delete a previously created configuration and configurations will be displayed.
9	Give the configuration a name.
10	Naming the broadcast.
11	The programmed sequence starts at PC start-up instead of the default configuration.

Text message

EASY MULTI DISPLAY

TEXT MESSAGE

YOUR MESSAGES

List of messages

1 PURCHASED 1 FREE
STAR WARS
SALES
COVID

1 + ADD MESSAGE 2 - DELETE MESSAGE

Select a message to modify it

Name 1 PURCHASED 1 FREE 3

Text Choose Picture Choose 4

1 item purchased = 1 item free on the products indicated! 5

Background Picture Choose 6

If Vertical Scrolling : YES Go to the line after the picture YES 7

Width 1920 Pixel(s) Or Fullscreen Height 80 Pixel(s) Or Fullscreen 8

Direction Left Effect Scroll Speed: 15

Background Color #000000 Text Color #ff0000 Shadow YES #0000ff 3

Font Ink Free Font Size 27 Pt

MEMORIZE PREVIEW MESSAGE

DISPLAY

Message to Display 1 PURCHASED 1 FREE Screens 1 2 3 4 5 6 Delay Always on screen 10

DISPLAY MESSAGE

Alerts are not launched with your display

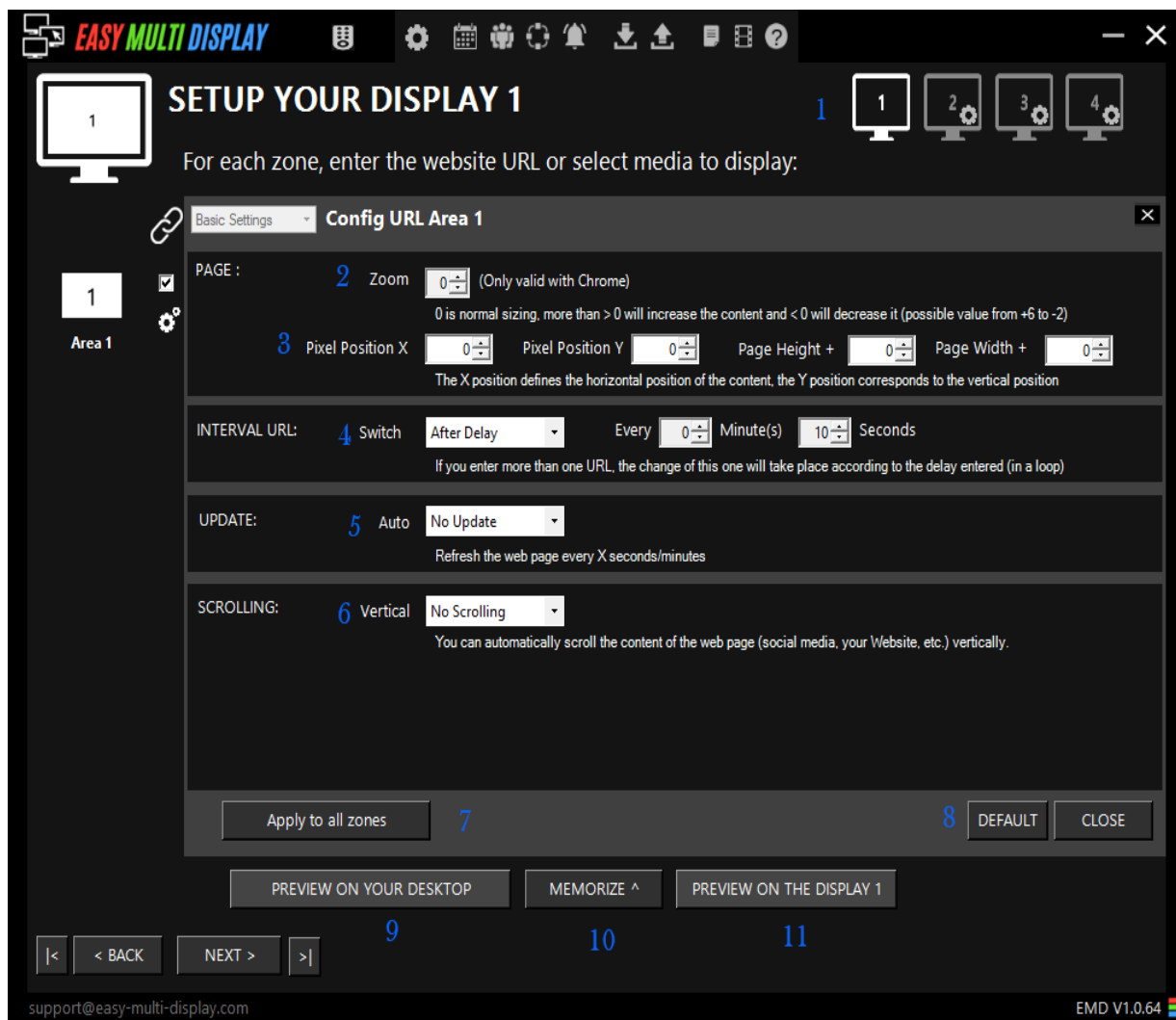
MEMORIZE

support@easy-multi-display.com EMD V1.0.64

1	Add a message.
2	Delete a message.
3	Give your message a name.
4	Broadcasting an image.
5	Text to be shown on screen.
6	Background image for your alert message.
7	Centre the image or text and go to the line if scrolling vertically.
8	Change the width and height of your message.
9	Set up your alert message.
10	Choose the message to be displayed, on which screen(s) and the time frame.

Configuring URL parameters

This menu allows you to configure the display of your websites on Easy Multi Display.



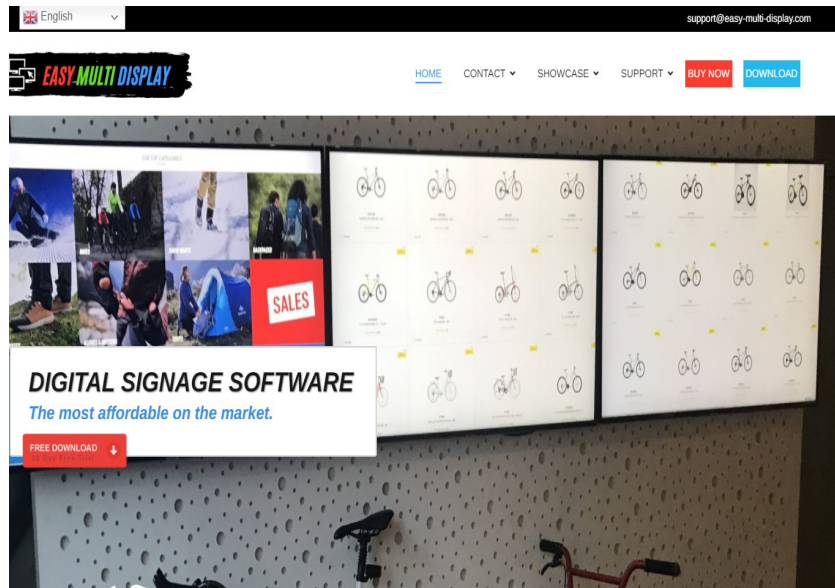
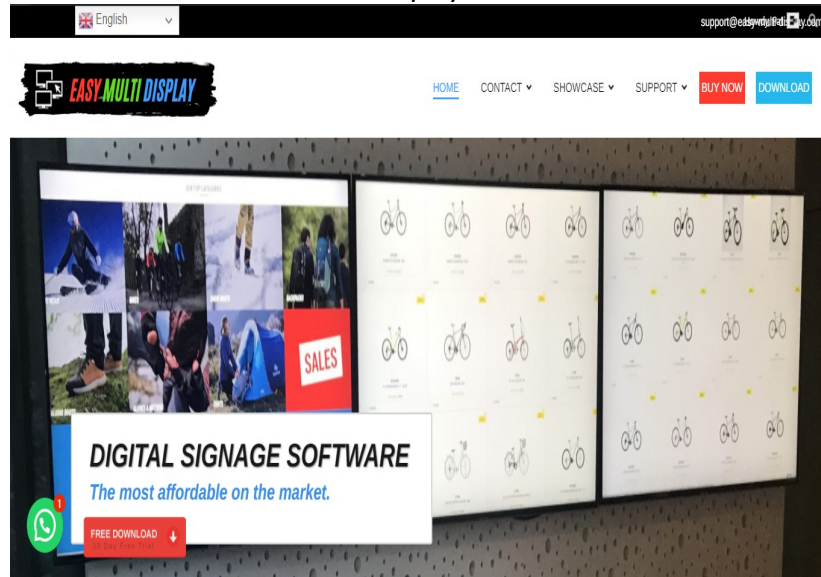
1	Select the screen to be configured.
2	Choose the zoom to be applied to the web page.
3	Change the framing of the web page.
4	Set up URL changes.
5	Change the refresh settings for web pages.
6	Change the scroll settings on your web page.
7	Apply the configuration of this field to all other fields on this screen.
8	Reset the configuration of this zone.
9	Overview of this configuration on your desktop.
10	Remember the changes made to this area.
11	Overview of this configuration on screen 1.

Below is a more complete description of the Easy Multi Display URL configuration.

1. You can configure any screen by clicking on the corresponding screen wheel.
2. Zooming is only available with Google Chrome and you can zoom in up to ten times and zoom out up to two times.
3. This option allows you to change the layout of your web page.

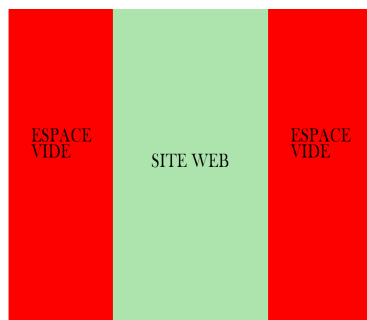
3.1. Pixel Position X: changes the **horizontal** position of the content.

a) Pixel Position X = 0: the site is displayed as it is.

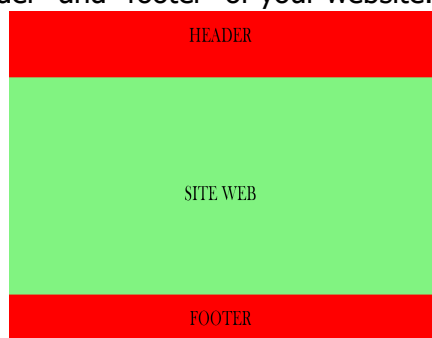


b) Pixel Position X = 100: the site is shifted to the right by 100 pixels.

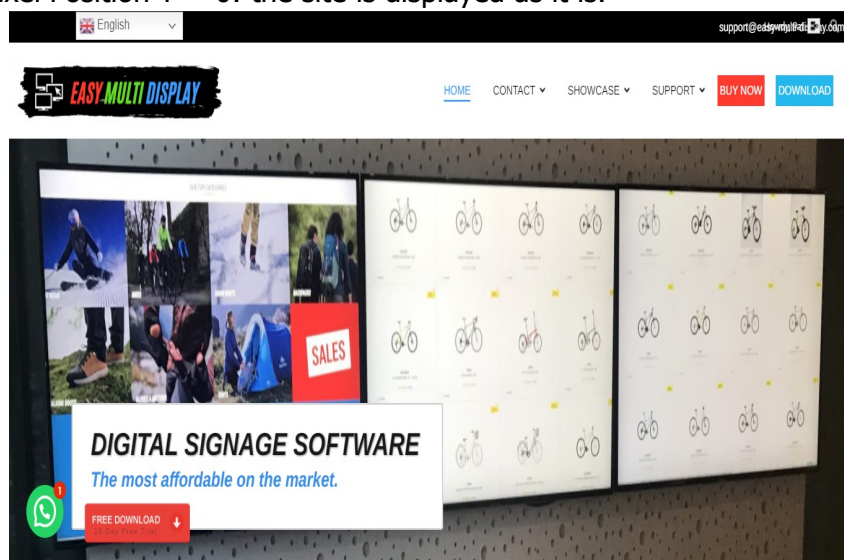
- 3.2. Page Width +: Allows you to remove the banner ads or empty spaces on the left and right sides of your website. In the image below, the red areas will be removed by configuring the "Page Width +" option in EMD.



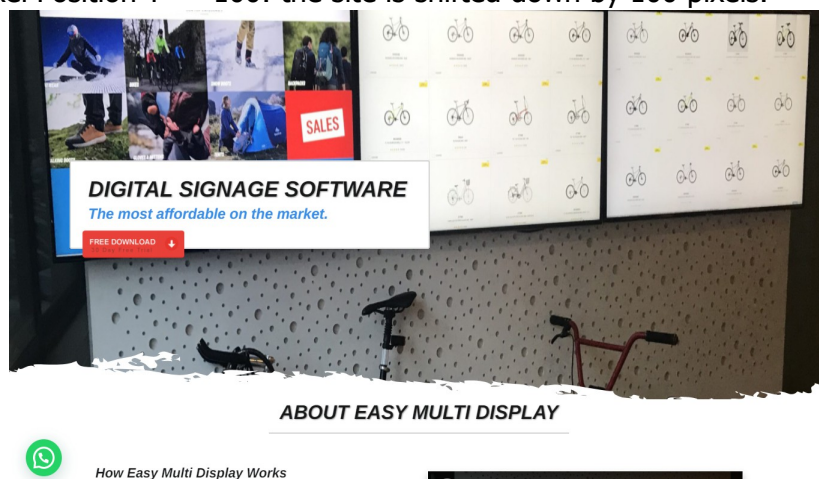
- 3.3. Page Height +: has the same use as "Page Width +" except that "Page Height +" removes the "header" and "footer" of your website.



- 3.4. Pixel Position Y: changes the **vertical** position of the content.
a) Pixel Position Y = 0: the site is displayed as it is.



b) Pixel Position Y = -100: the site is shifted down by 100 pixels.



Easy Multi Display shortcuts

Here are the Easy Multi Display keyboard shortcuts to make your use easier.

FUNCTION	RACCOURCIS
ESC	Stop Easy Multi Display.
ALT+Q	Stop Easy Multi Display.
CTRL+E	Start Easy Multi Display.

FREQUENTLY ASKED QUESTIONS

Hardware

System requirements

Minimum Configuration

From 1 to 3 Screens



Operating System: Win 7 64-bit / Win 8.1 64-bit / Win 10 64-bit

Processor: Intel Core i5-2500K 3.3GHz / AMD FX-8350 4 GHz

RAM: 8 GB

Graphics Card: NVIDIA GTX 1050 / Radeon RX 550

Disk Drive: SSD 240 GB

Recommended Configuration

From 4 to 5 Screens



Operating System: Windows 10 64-bit

Processor: Intel Core i5-9600K 4,6 GHz / AMD Ryzen 7 1800X 4GHz

Ram: 16 GB

Graphics Card: Nvidia GTX 1660 / AMD Radeon RX 580

Disk Drive: SSD 480 GB

Advanced Configuration

With 6 Screens



Operating System: Windows 10 64-bit

Processor: Intel Core i7-9700K 4,9 GHz / AMD Ryzen 7 3800X 4,5GHz

Ram: 32 GB

Graphics Card: Nvidia RTX 1660 / AMD RX VEGA

Disk Drive: SSD 480 GB

Which cables go to the television?

This depends on your current setup as you will need as many HDMI cables as you have TVs. However, the price of a cable is relatively inexpensive as an HDMI cable will cost you around 5 euros each.



Câble HDMI

If you wish to purchase one or more cables, please click [here to be](#) redirected to the Fnac website.

For more information, please refer to the chapter "How much does the Easy Multi Display complete solution cost?"

How much does the complete Easy Multi Display solution cost?

TekAngel does not provide the complete solution but only the digital signage software, however, we can provide you with a price estimate for the complete solution including the cost of the software and the cost of the hardware.

One-screen solution :

Mini PC (250€) + HDMI cable (5€) + 109 cm TV (300€) + TV stand (20€) + EMD software (149€).

Total cost of the solution: approximately 724 euros.

Three-screen solution:

Gaming PC with graphics card (1000€) + 3 HDMI cables (15€) + 3 TVs 109 cm (900€) + TV stand (60€) + EMD software (499€).

Total cost of the solution: approximately 1720 euros.

Six-screen solution:

Gaming PC with 2 graphics cards (1000€) + 6 HDMI or alternative cables (30€) + 6 TVs 109 cm (1900€) + TV stand (120€) + EMD software without remote control (499€) / EMD software with remote control (899€)

Total cost of the solution: approximately 3499 euros.

Software

Can I display the same image in several shops?

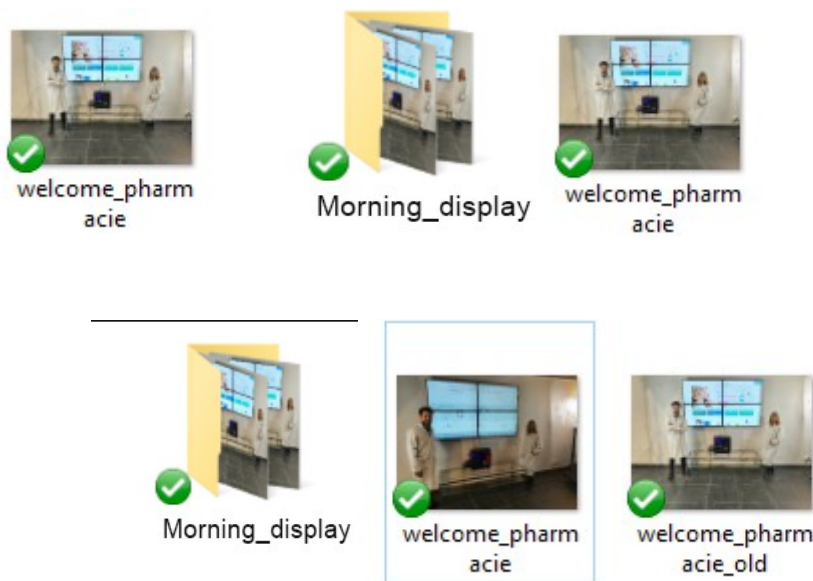
Yes, this is possible with Easy Multi Display!

1. Set up the same folder architecture on OneDrive for all your businesses.

Dropbox > emd > Pharmacies > pharmacie_Biarritz

Dropbox > emd > Pharmacies > pharmacie_guéthary

2. Give the same name to the files you want to use in your shops.



3. If you want to change the image quickly via your mobile or PC, replace the old image with a new one while keeping the file name. You will not have to make any changes on EMD, the new image will be displayed automatically.

How to display free messages?

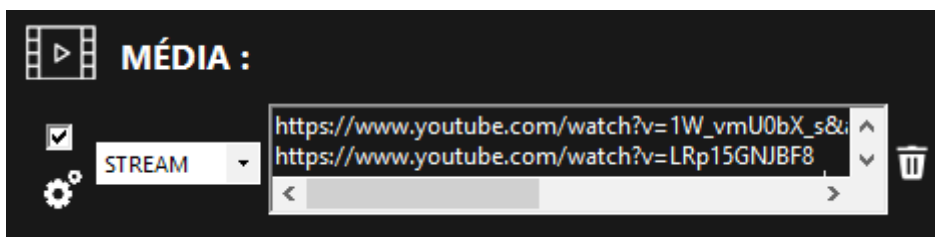
Click on the "doorbell" icon to set up your messages.



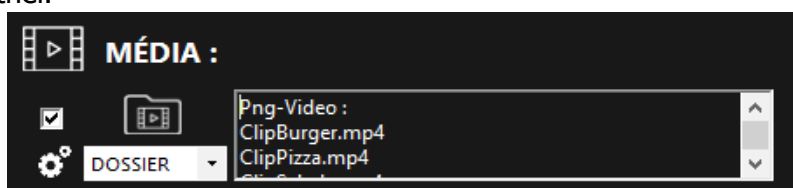
Can I display several videos one after the other?

Of course! There are several solutions for this!

1. If you use YouTube, you just have to insert your links in "Stream".



2. Add your videos to a folder and choose the option "Folder in EMD. Your videos will play one after the other.

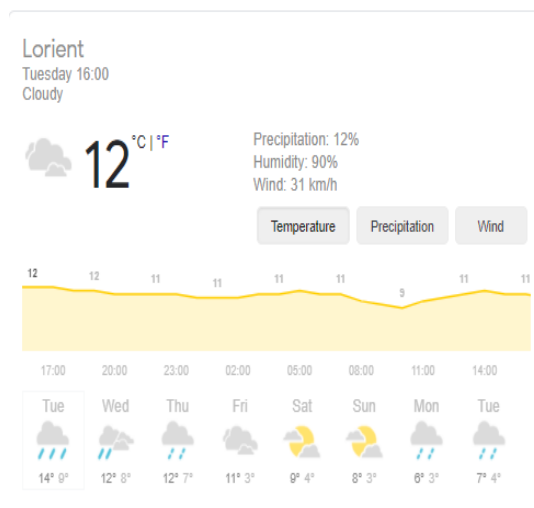


How to display the day's weather?

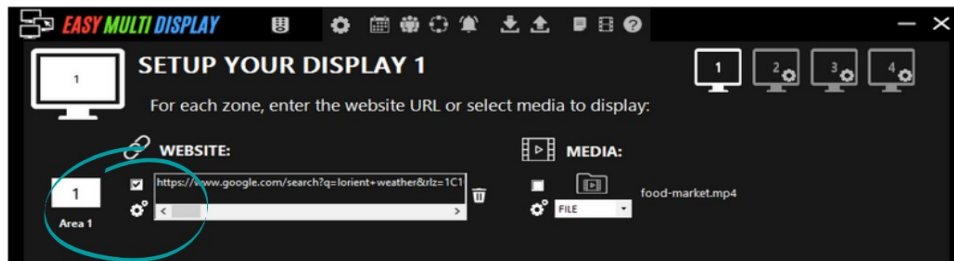
In order to quickly set up your city's weather, we suggest you use Google Weather for ease of use.

Please simply ;

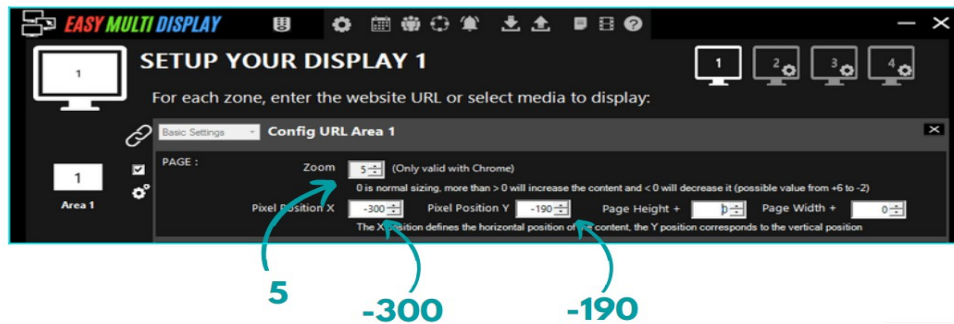
1. Choose your city



2. Enter the Google link in EMD. For example, the weather for the city of Lorient would be -> www.google.com/search?q=meteo+lorient



3. Configure the settings according to the images below in order to display the weather in pixel detail.



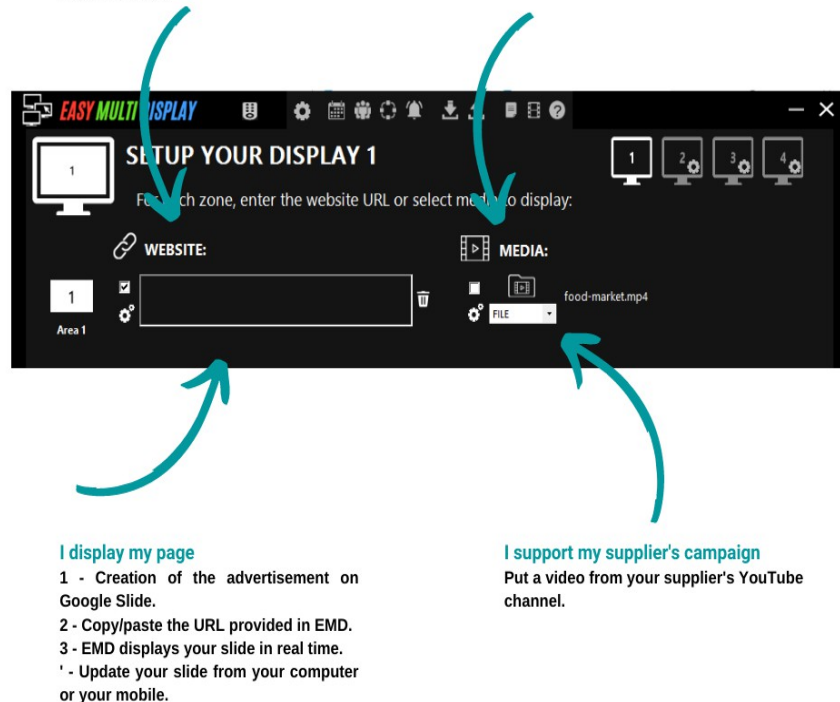
How do I display my promotions?

I'm using Google Slide

- 1 - Creation of the advertisement on Google Slide.
- 2 - Copy/paste the URL provided in EMD.
- 3 - EMD displays your slide in real time.
- 4 - Update your slide from your computer or your mobile.

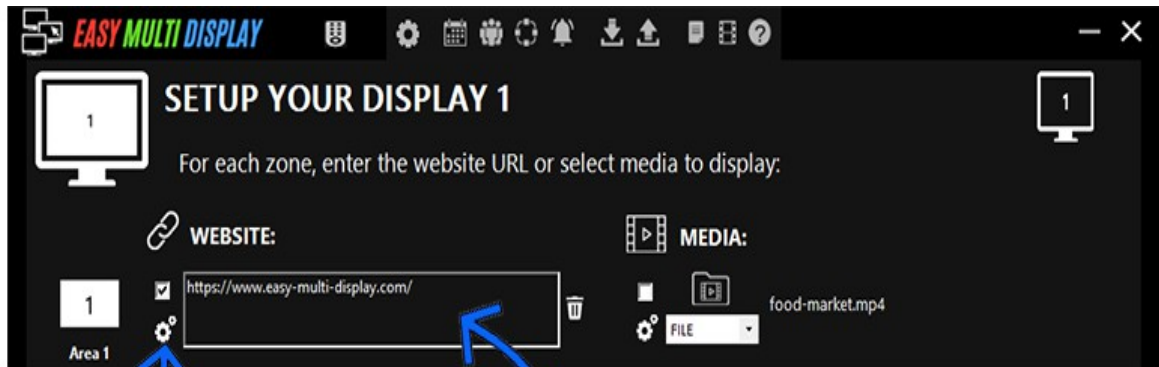
I put my videos or photos

Create your promotional photos or videos or ask a creative service that will create your images for 50 euros per hour HT.



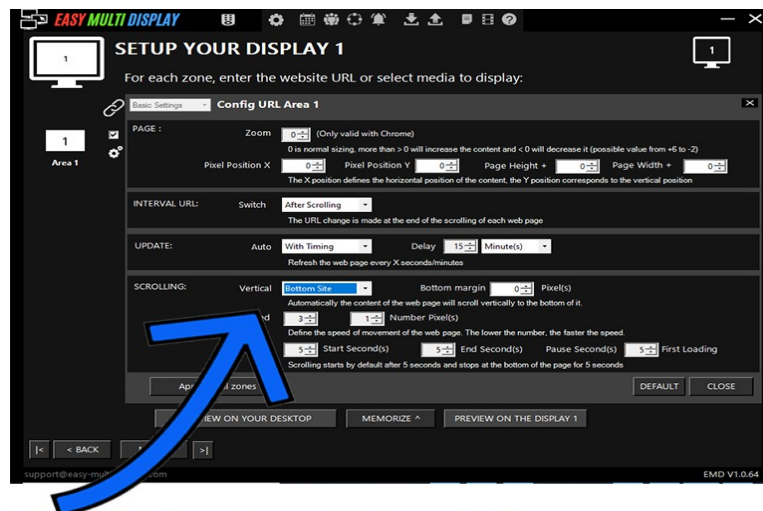
How to scroll vertically on your website?

Anything that moves attracts the eye, simulate a movement on the mouse wheel and display, for example, all of your articles. This way you can make your webshop lively and dynamic.



1 - Enter your website here.

2 - Click here to configure the software.

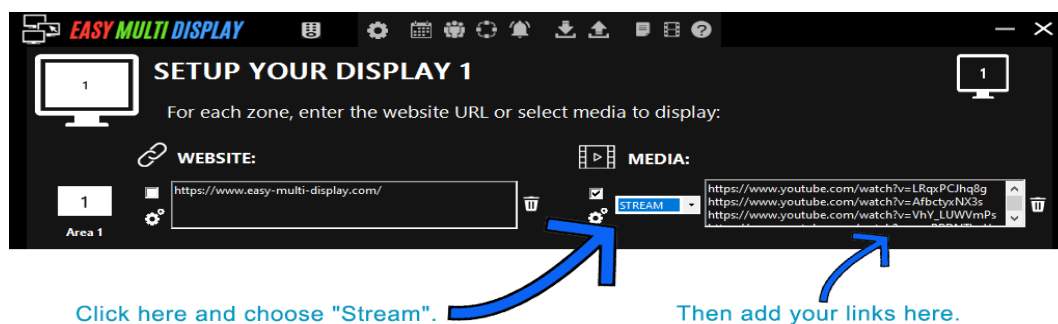
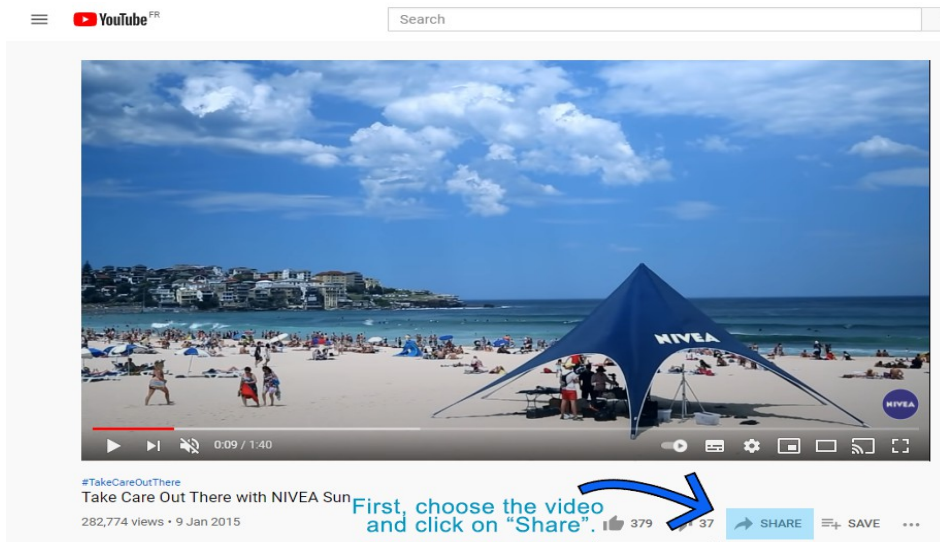


3 - Click on "Vertical" and then choose "Bottom of site" to scroll your site from top to bottom.

4 - Click on "Mémorize".

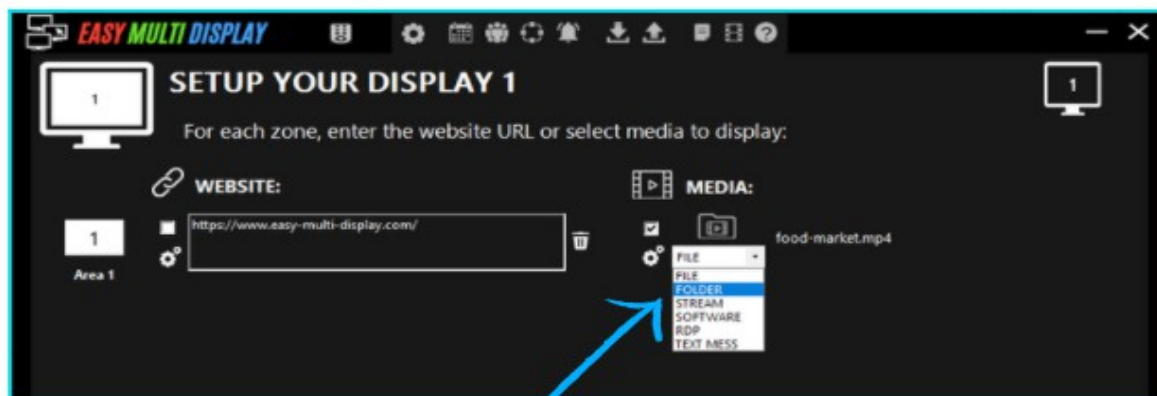
How do I post a YouTube video?

You can add one or more YouTube links. The video is displayed in full screen and the links play one after the other. Videos are stored temporarily in the player and do not consume bandwidth.

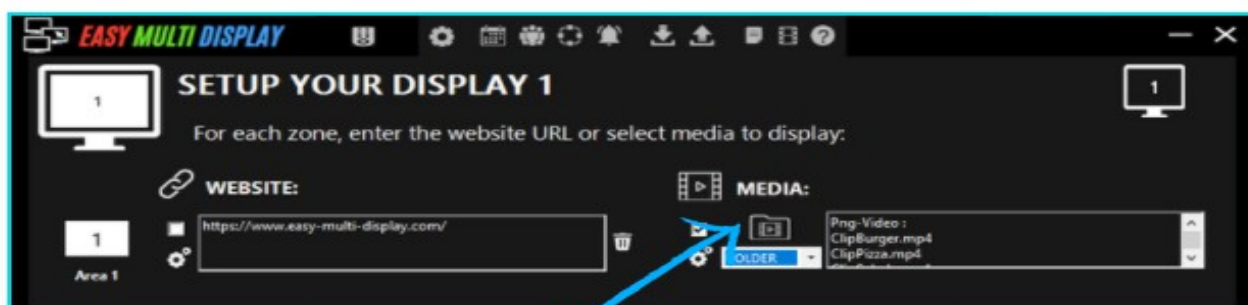


How do I scroll through my photos?

Of course, you can also scroll your photos with Easy Multi Display! Just follow the instructions below and your pictures will scroll until the last one, then the display will start again in a loop. So don't hesitate and put as many pictures as you want!



1 Click here and choose the "Folder" option.

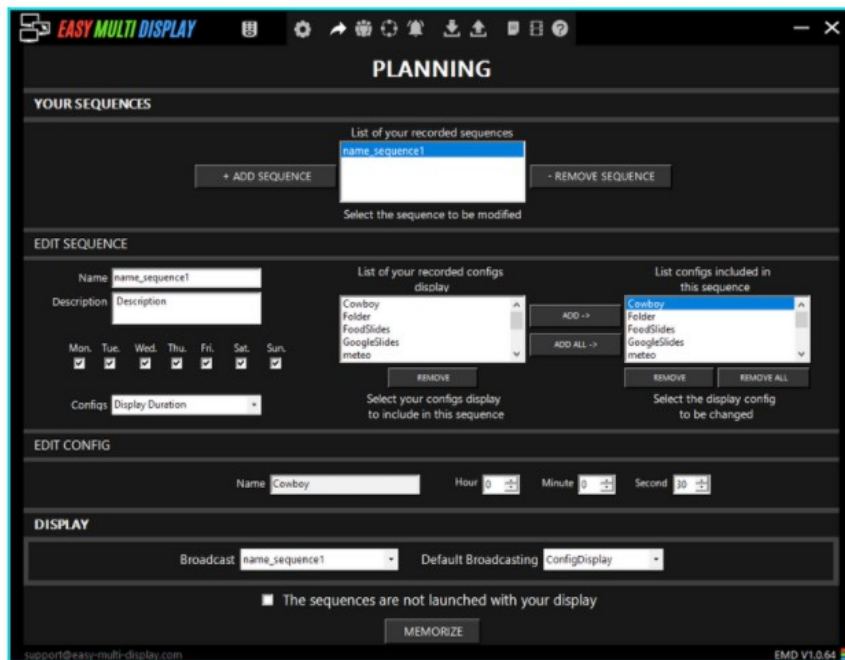
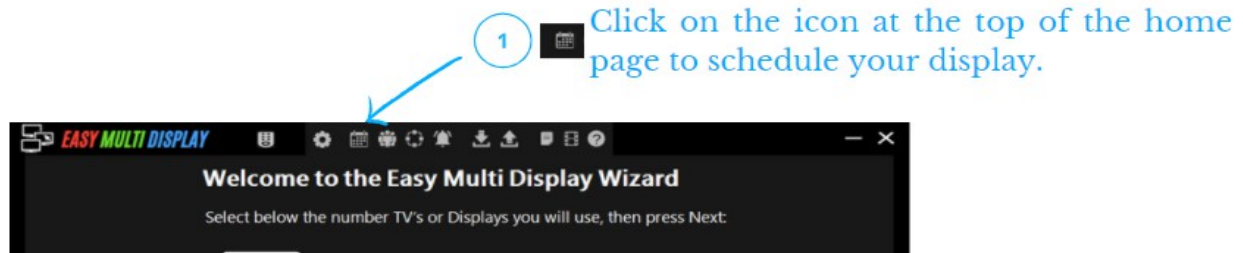


2 Click on this icon and choose your folder containing your images (JPG, PNG, BMP), this folder can also contain videos with your images.

How to plan changes during the day?

Simply plan your setup for the day!

From 9am to 4pm you can promote a vitamin brand and then from 4pm to 7pm you can display a promotion on the Relax product range! The possibilities are endless and will allow you to adapt your communication to the key moments of the day or week!



What is a software maintenance contract?

A software maintenance agreement is a common agreement found in the software industry. It is an agreement between the customer and a software company that guarantees continued use of the software at both ends. This means that the software provider agrees to maintain and update the software so that it continues to function effectively and is up to date with technological advances and security issues. As a customer, you sign a maintenance contract to ensure that you have access to these updates as soon as they are released.

For example, just as your car needs servicing every year, perhaps an oil change or tyre alignment. The software also needs similar patches to ensure optimal performance, as the world of technology changes rapidly.

What is EMD's maintenance contract?

We offer every customer the possibility to invest in the maintenance contract for Easy Multi Display. If you choose to subscribe, you will be charged a flat fee of 20% of the cost of the software, on an annual basis.

Acceptance offers you some additional benefits:

- Rest assured that as technology advances, so does EMD software.
- When other customers request customisations from EMD, you will also have access to these additional features, such as new data type connectors.

What if I don't sign the maintenance agreement?

No problem! You can continue to use Easy Multi Display and your current version will continue to work as is. However, you will not have access to additional features that may be developed or added to the software throughout the year. These features can be the possibility to use different types of data sources for your displays.

To access these features, you will have to pay the software upgrade fee, which may be higher than the 20% maintenance fee you would have paid throughout the year.

What are the main security risks of cloud computing?

We will start with a story...

One of our first customers in 2007 was a real estate agency in the Vendée region of France. This agency was already using digital signage hosted on the cloud to present the properties available for rent and sale, on 6 different screens in its shop window.

However, the company that provided the cloud-based display service went out of business and the estate agency was left out in the cold. They were left with 6 screens that no longer worked. Our first software, "Vitrine Multimedia" (from the creators of Easy Multi Display) was born out of this client's need...

Here are some of the reasons why cloud-based solutions are not always the best solution.

- The existence of security flaws in both the logical layers of the data centre and those resulting from human error;
- Fragility in access and identity management, although some providers are strengthening authentication interfaces with other means such as certificates, smart cards, OTP technology and many others;
- The use of insecure APIs to integrate applications with cloud services;
- Exploitation of operating system vulnerabilities on cloud servers and even on hosted applications;
- Account hacking, which is an ancient type of computer attack, has been on the rise since the advent of the Internet and even cloud computing;
- Malicious action initiated internally within the provider's workforce. An attacker from the datacenter management team can easily compromise the confidentiality and integrity of hosted environments;
- Advanced persistent threats which consist of a form of attack where the attacker somehow manages to install a device in the organisation's internal network, from which he can extract important or confidential data. This is a form of attack that is difficult for a cloud service provider to detect;
- Loss of data that can be caused by a computer (logical) attack on the data centre, a physical attack (fire or bombing), a natural disaster, or even simply a human factor at the service provider, for example in the case of company bankruptcy;
- Gaps in internal adoption or transition strategies to the cloud. Companies or organisations often do not consider all the security factors related to their operations before subscribing to a cloud service. This can be fatal, both in terms of application development and basic usage;
- Fraudulent use of cloud technologies to hide identity and conduct large-scale attacks. Typically, these are accounts created during trial periods (most ISPs offer a 30-day free trial) or fraudulently purchased access;
- Denial of Service (DoS) is an attack that consists of making a service unavailable by excessive consumption of resources such as processors, memory or the network. The idea for the hacker is to succeed in overloading the resources of the data centre in order to prevent other users from taking advantage of the services;
- Flaws linked to the heterogeneity of the technologies embedded in the internal architecture of the cloud, and the external architecture for interfacing with users.

According to several audit experts, the risks and losses associated with cloud solutions are constantly increasing and 8 times out of 10, the hacked company does not know it. Still,

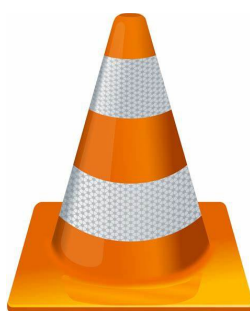
many CIOs are struggling to get new budgets to avoid this increased risk. Some, having run out of arguments with their management, end up wishing for serious incidents to make management aware of the need to invest a little more in security.

At CSI 40 CIO who estimated that the total number of "hacked" SaaS applications in his company was close to 100, learned from an audit that there were actually 2,500...

Unlike the competition, our applications do not use the cloud for all these reasons!

Why do we offer two different video players?

Some companies do not allow software to be installed on their network, so we offer a choice of different players for displaying your videos (the selection of these different players can be made in the EMD configuration section).



VideoLAN Client (VLC)

VLC is one of the most powerful video players but requires the installation (dependencies) of certain system files to work.

Benefits: VLC can play most codecs, video files such as MPEG-2, MPEG-4, H.264, MKV, WebM, WMV, MP3, etc. It can also play many types of streaming files such as YouTube, Dailymotion, Vimeo, etc.



Windows Media Player (WMP)

WMP does not require any specific files to be installed in the system and allows EMD to run from a USB stick without any prior installation of the EMD software.

Disadvantages: WMP is more limited in playing different video formats and it cannot play streaming files such as YouTube, Dailymotion, Vimeo, etc.

Some companies such as AIRBUS (aeronautics) or THALES (army) do not allow any software installation on their ultra-secure network, unlike a local restaurant.

It is for the same reason that 2 different browsers are also proposed in EMD.

Contact us directly for more information on how to install EMD in the way that best suits your restricted network.

Why do we offer two different browsers?

Some companies do not allow the installation of particular software on their network, some organisations prefer Firefox and others prefer Chrome ... that is why we offer you a choice of different browsers to display your websites. (You can select them in the configuration section of EMD).



Chrome

Chrome is one of the most powerful browsers, but requires the installation (dependencies) of certain system files to work.



Firefox

Firefox does not require the installation (no dependencies) of specific files in the system and allows EMD to run from a USB stick without any prior installation of the EMD software.

There is a website (<https://html5test.com/>) that allows you to review the shortcomings and strengths of each browser. According to this site:

Chrome scores 528 points out of 555.

Firefox scores 481 points out of 555.

For example, companies like AIRBUS (aeronautics) or THALES (military) do not allow any

software installation on their ultra-secure network, unlike a local restaurant.
For the same reasons, 2 different video players are also offered in EMD.

Contact us directly for more information on how to install EMD in the way that best suits your network restrictions.

Can I use my laptop?

Maybe. It depends on how many TV screens you want to use.

Most laptops only have enough display adapters (physical connection points) for 1 screen. However, if that's all you need, a laptop running Windows 10 will work fine.

If your laptop is recent (less than a year old) and of high quality (700 € +) and has USB3 ports, you can use this type of converter (USB3 to HDMI) to add 1 or 2 screens.



Keywords to buy this product: USB3 HDMI Converter.

Which graphics card do I need?

You can use any graphics card you like, but it must be able to support the number of displays you want to connect. Easy Multi Display supports up to 6 single displays. *

See below for more information on our enterprise solutions for more than 6 screens.

Minimum Configuration

From 1 to 3 Screens



Operating System: Win 7 64-bit / Win 8.1 64-bit / Win 10 64-bit

Processor: Intel Core i5-2500K 3.3GHz / AMD FX-8350 4 GHz

RAM: 8 GB

Graphics Card: NVIDIA GTX 1050 / Radeon RX 550

Disk Drive: SSD 240 GB

Recommended Configuration

From 4 to 5 Screens



Operating System: Windows 10 64-bit

Processor: Intel Core i5-9600K 4,6 GHz / AMD Ryzen 7 1800X 4GHz

Ram: 16 GB

Graphics Card: Nvidia GTX 1660 / AMD Radeon RX 580

Disk Drive: SSD 480 GB

Advanced Configuration

With 6 Screens



Operating System: Windows 10 64-bit





Processor: Intel Core i7-9700K 4,9 GHz / AMD Ryzen 7 3800X 4,5GHz

Ram: 32 GB

Graphics Card: Nvidia RTX 1660 / AMD RX VEGA


Disk Drive: SSD 480 GB

Tips on the graphics card Video output:

HDMI 4096 x 2160 60Hz	Display Port 7680 x 4320 60Hz	DVI 1920 x 1200 60Hz	Mini Display Port 2560 x 1600 60Hz
			

Be careful to choose your card according to the outputs available on your screens, those with DisplayPort or MiniDisplayPort are less common and the use of converter (DisplayPort to HDMI) is expensive.

Ventilation :

Without ventilation Passive system	With ventilation Active system
Benefits <ul style="list-style-type: none"> ✓ Reduced energy consumption ✓ Silent 	Benefits <ul style="list-style-type: none"> ✓ computing power ✓ Multiple display output (HDMI-DVI DisplayPort) ✓ Resource optimization
Disadvantages <ul style="list-style-type: none"> ✓ Expensive ✓ Limited power ✓ One type of display output (MiniDisplayPort) 	Disadvantages <ul style="list-style-type: none"> ✓ High energy consumption ✓ Noisy (+/-30 db)
Our recommendation <p>Here are two popular graphics cards that we recommend. They are professional cards, priced around 300€.</p> <p>1 - NVIDIA QUADRO P620</p> <p>Support for up to 4 displays (MiniDisplayPort).</p> <p>2 - AMD RADEON PRO WX 4100</p> <p>Support for up to 4 displays (MiniDisplayPort).</p>	Our recommendation <p>We recommend this less expensive, versatile graphics card, well suited for digital signage, at a price of 200€.</p> <p>1 - GIGABYTE GEFORCE GTX 1050 WINDFORCE OC 4 Gb Ti</p> <p>Support for up to 6 displays (MiniDisplayPort).</p> <ul style="list-style-type: none"> • 3 x HDMI (3 screens with HDMI) • 1 x DisplayPort (1 screen with DisplayPort) • 1 x DVI-D (Dual Link 2 screens with DVI) <p> Tested and approved for intensive use 24/7, the best quality/price ratio.</p>

More than six screens:

You can use 2 graphics cards in SLI with a motherboard with 2 PCI-e slots to manage up to 12 displays.

Some high-end graphics cards offer support for up to 16 displays, and we also offer software solutions for control centres and display walls.

We would be delighted to help you with your project, [contact one of our support teams](#) to ensure you select the right equipment and discuss our various software solutions.

What type of TV set can I use with EMD?

Having the right screens is crucial to the effectiveness of your display!

We've put together our ideas and found some questions to ask you before you choose your displays.

1. What is your budget?

If you are making decisions primarily on price, it is important to know your budget before you start so you know what you can afford and don't waste time looking for options that are out of your price range.

2. What is the purpose of your screens?

People use screens for many different reasons, some small business owners display their menu on a small screen inside their restaurant, so an affordable generic branded TV may suit them very well, while other large customers use these screens as high end advertising space in their shop windows and so they are looking for more professional looking screens with clean lines and minimal bevels. How will you use your screens?

3. How often will the screen be used?

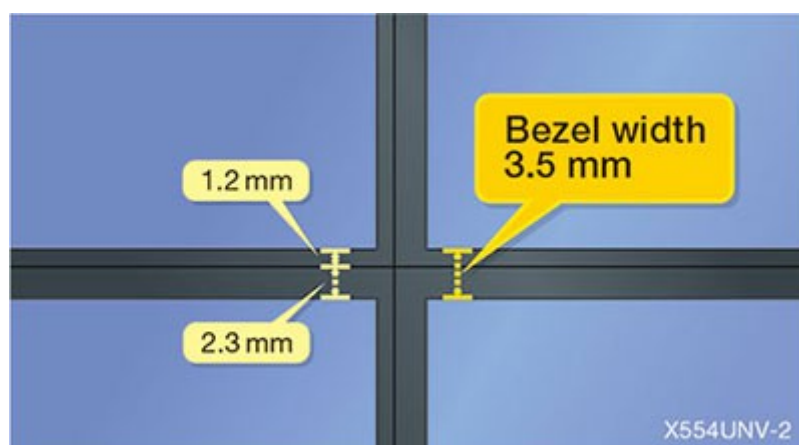
Are you going to use your screen 24/7, XNUMXj / XNUMX or only a few hours a day? When choosing your screen, be sure to ask your sales assistant about the life of the screen. Traditionally, LCD screens have a longer life than plasma screens, but check with your display dealer to find out about the latest technology.

4. What will be the physical composition of your screens?

Are you looking for a traditional landscape format or do you prefer a portrait orientation for your display?

How much wall or floor space have you allocated to your displays?

This will inform you of the maximum screen size you can consider. If you plan to assemble several screens, also consider the size of the screen frame.



5. What type of equipment will you need?

Do you need a display case or an entertainment unit? Perhaps you need wall mounts, or a projector and projection screen?

6. What type of display are you looking for?

There are many different options in the world of display media.

- A standard television set, about 250 cd / m²
- Digital signage screen from 300 cd / m² to 4000 cd / m² with improved antireflection treatment.

Your answers to the above questions will help you decide on your final choice of display medium.

The best-known brands in the field of digital signage are LG, Samsung and NEC.

Their specialised displays guarantee a low failure rate.

You can use all generic TV screens indoors with low light exposure, but be aware that they cannot produce the same performance or reliability as professional digital displays.

If you are not sure what type of screen you need, contact us and let us guide you through the many possible scenarios.

How to display your social networks on multiple screens?

For example, it's a breeze to scroll through your Instagram feed.

In this video, I use 2 screens in portrait mode (1080 * 1920) with 2 zones per screen and 2 Instagramers per zone (8 instagram feeds in the video).

<https://www.youtube.com/watch?v=cVVfxrgNP80>

The difference with the other videos is that I specified a height of 4500 pixels per stream ("Specify height" function) so that they all stop and start at the same time.

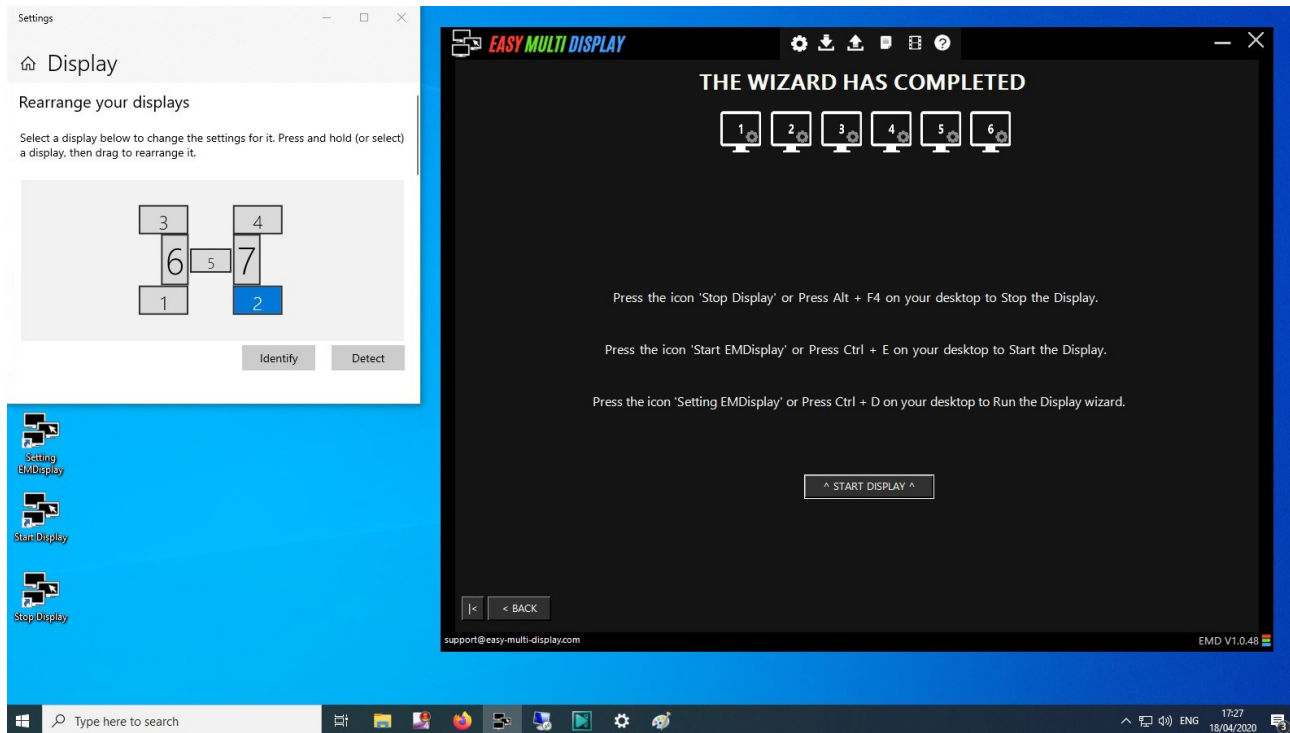
Previously, I used the "Bottom Site" function which scrolls the whole feed. You can either change the URL after a set time (e.g. every 2 minutes), or change the URL at the end of the automatic vertical scroll.



It works with all social networks (Twitter, Facebook, Linkedin, Pinterest, Viadeo, etc.), all websites, all online shops such as prestashop, joomla, wordpress, blogspot, etc., all ecommerce platforms such as Ebay, Amazon, Leboncoin, Airbnb, and all real estate sites.

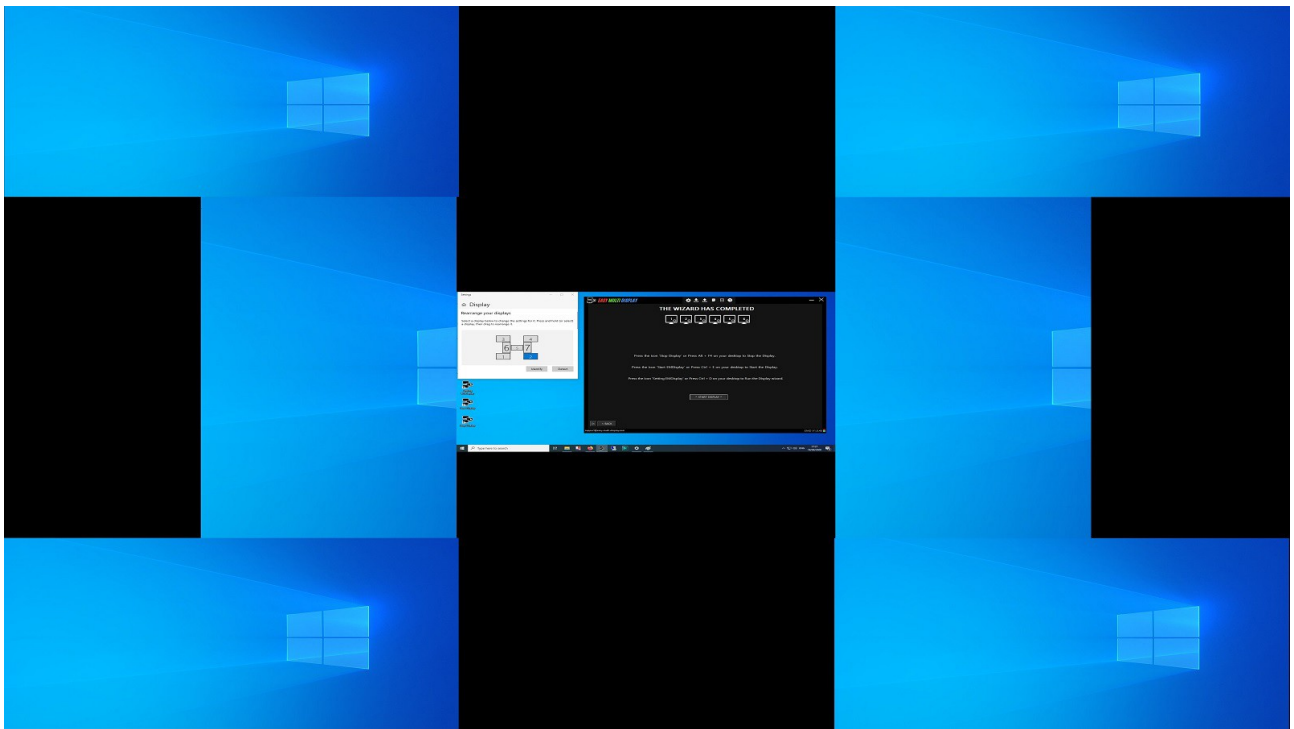
PS: it's the video that jerks (the 2160 * 1920 high resolution screenshot...), not the scrolling which is perfectly smooth.

How to broadcast on six screens with one monitor?

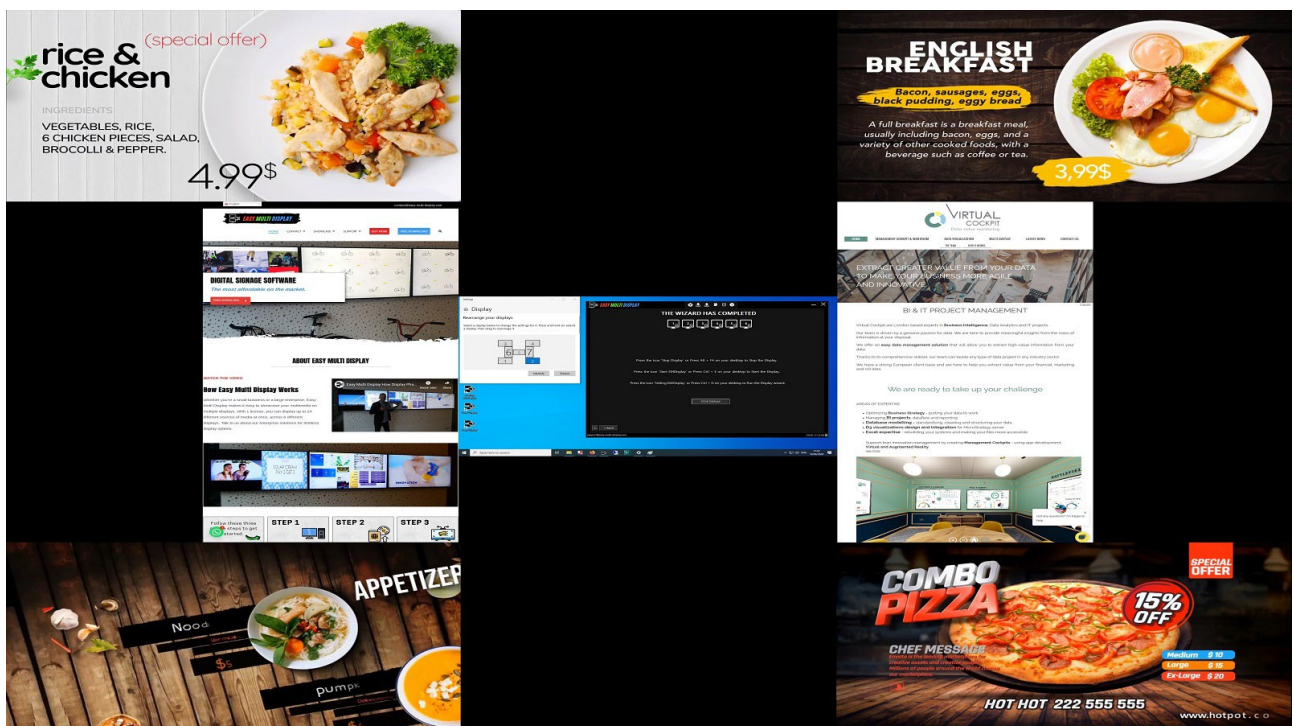


You can display your media or URLs on 6 screens with the basic version of EASY MULTI DISPLAY (Enterprise version up to 9 for the screen wall + 1 control) and use a 7th control screen with only one PC (ideal for supermarkets, fast food outlets, shopping centres, etc.). No need for a specific expensive player that only handles one or two screens and no need for a cloud 3.0.

It's very simple with our software, just plug in your displays (hdmi, displayport, dvi, rj45, usb converter, etc. EMD works with all existing display outputs) then go to the software configuration settings by clicking on the little gear button at the top and click No for "use your desktop to display media".



- * 4 screens in 1920 * 1080, landscape mode with video folder.
- * 2 screens in 1080 * 1920, portrait mode with multiple URLs scrolling automatically.
- * 1 screen, your desktop to control your digital signage.



We could have divided each screen and put several media or URLs on it (max $4 * 6 = 24$ zones).

How to change the ratio of your videos?

Please follow this video for a detailed explanation.

<https://youtu.be/0r6GR0LoJQE>

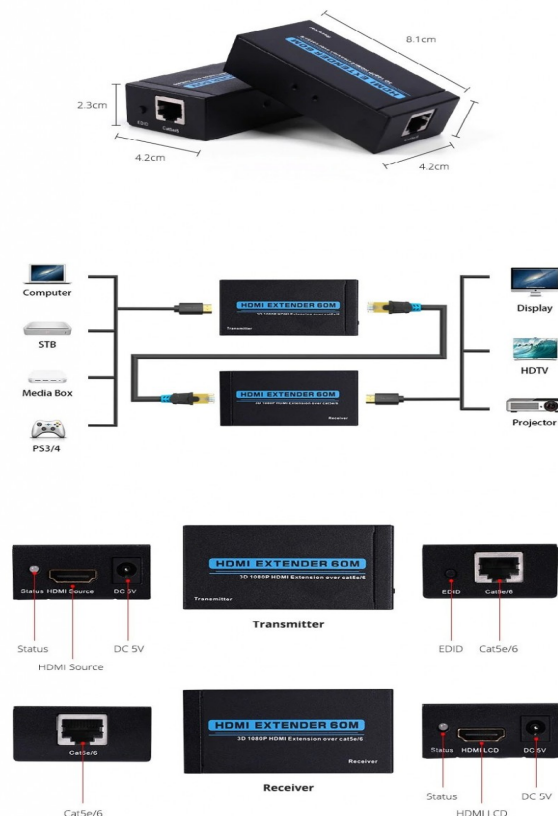
How can I use the existing rj45 network to broadcast on several screens?

<https://youtu.be/U5kMcSZLqEw>

How can you use the existing rj45 network to broadcast to one or more remote screens within your company? As always with Easy Multi Display, we have the solution!

It's very simple, use HDMI to rj45 converters (20 €), we have been testing this solution for several years and it works perfectly on your existing Ethernet network.

Our Easy Multi Display software solution manages up to 6 displays with one PC, you only pay once and you don't need a cloud (with a useless subscription except to be hacked) to broadcast your media all over your company.



Where can I find royalty-free images and videos?

- <https://unsplash.com>
- <https://pixabay.com>
- <http://www.1millionfreepictures.com>
- <https://www.splitshire.com>
- <https://gratisography.com>
- <https://kaboompics.com/gallery>
- <https://isorepublic.com>
- <http://www.everystockphoto.com>
- <https://www.stockvault.net>

How to display Youtube, Vimeo and Dailymotion videos?

<https://youtu.be/sA7cqRs03U>

YOUTUBE

Right click on the Youtube video and copy the URL of the video.

URL accepted:

<https://youtu.be/sA7cqRs03U>

<https://www.youtube.com/watch?v=sA7cqRs03U>

<https://www.youtube.com/watch?v=sA7cqRs03U&feature=youtu.be>

DAILYMOTION

Copy the URL displayed in the address bar of your browser.

URL accepted:

<https://www.dailymotion.com/video/x71d2s4>

VIMEO

Either click on the VIMEO video the "Share" button and copy the address: Link.

Or copy the URL displayed in the address bar of your browser.

URL accepted:

<https://vimeo.com/282576080>

How to scroll a web page vertically and automatically?

Set your web page to scroll automatically on your digital display!

Watch the video below to find out how...

<https://youtu.be/2EJrV7Im3IA>

In the video example, we show you a display with 2 zones.

Zone 1 (left zone)	Zone 2 (right zone)
Here we post a Twitter feed using the hashtag #NewBike	Here we post on Instagram using the hashtag #NewBike
url : https://twitter.com/hashtag/newbike?lang=en	url : https://www.instagram.com/explore/tags/newbike/
the zoom level : 2	the zoom level : 2

How to display several websites per zone?

https://youtu.be/_e_xwnI04iY

The next time you update the EMD software, you will be able to scroll your websites vertically automatically by setting the scroll time in seconds and the height. This is an example on one screen (up to 6 screens per PC at present and soon 12 screens per PC for your video walls) divided into 3 zones but ideally one zone should be used with a screen in Portrait mode.

With these different sites

<https://www.thalesgroup.com>

<https://www.airbus.com/>

<https://www.takeda.com>

<https://all.accor.com/fr/brands/hotels-sofitel.shtml>

<https://www.danone.com/>

<https://www.unicef.org/>

<https://www.naval-group.com>

<https://www.virtualcockpit.co.uk/>

<https://usa.visa.com/>

<https://www.loreal.com/>
<https://global.canon/en/index.html>
<https://www.beaugrenelle-paris.com/en>

How to display air traffic information?

Air traffic information is easy to display with Easy Multi Display

Watch the video below to find out how ...

<https://youtu.be/05uaeRYE0Ew>

In this example, we display different features of PARIS CHARLES DE GAULLE airport in two different areas.

Zone 1 (upper zone)

Here we have displayed the real-time flight monitoring for Paris Charles De Gaulle airport in France using a single URL and adjusting the zoom level.

url :
`https://fr.flightaware.com/live/airport_status_bigmap.rvt?airport=LFPG`
the zoom level : 2

Zone 2 (lower zone)

In zone 2, we display arrivals and departures using a single URL.

url :
`https://fr.flightaware.com/live/airport/LFPG`
the zoom level : 2

You can do this with any airport in the world.

Simply go to the flight or airport tracking website and search for the arrival or departure pages you wish to display, then copy the link and paste it into your Easy Multi-Display Setup Wizard.

Remember, Easy Multi Display is flexible and can meet many needs.

If you wish, you can divide your display into 1, 2, 3, 4, 5 or 6 zones.

You can even display arrivals, departures, scheduled departures and a flight tracking map in four different areas if you wish.

Want to know more about how you can achieve your goal with Easy Multi Display? Contact us to discuss with our friendly support team.

How to display traffic information?

<https://youtu.be/IJp1CKoLby4>

Live traffic information (with our EMD digital signage software):

It is very easy to display live traffic information on one or more screens with our digital signage solution "Easy Multi Display".

In the example we use the Google service, but there are a plethora of sites that offer this service.

New York traffic with Googlemaps :

<https://www.google.com/maps/place/New+York,+NY,+USA/@40.6971494,-74.2598676,10z/data=!3m1!4b1!4m5!3m4!1s0x89c24fa5d33f083b:0xc80b8f06e177fe62!8m2!3d40.7127753!4d-74.0059728!5m1!1e1>

How do I view my Google Slides presentations, documents and spreadsheets?

EMD compatible with Google Slides, multi-screen, multi-zone up to 24 presentations on 6 screens and you can alternate them every x min/s by setting the urls in the panel provided. You can display multiple URLs per zone to display 100 different presentations if you wish, no problem!

<https://youtu.be/cDeaafguCZo>

The advantage of using Google Slides presentations is that you can manage your screens from your remote sites without any configuration, from your desktop or with your smartphone.

You edit a slide and your screens are automatically updated! You can integrate audio, video and the tool to create your compositions is very easy to use.

How to remove the Google Control Panel from your slides?

Please follow the video tutorial.

<https://youtu.be/rlhfTovzrDs>

How do I configure network management with Easy Network?

With the Easy network function, you can control another PC and its screens (up to 6 screens) on your local network from your office, very easily in 3 clicks.

<https://youtu.be/IMENeJpioLk>

How to position your screens correctly?

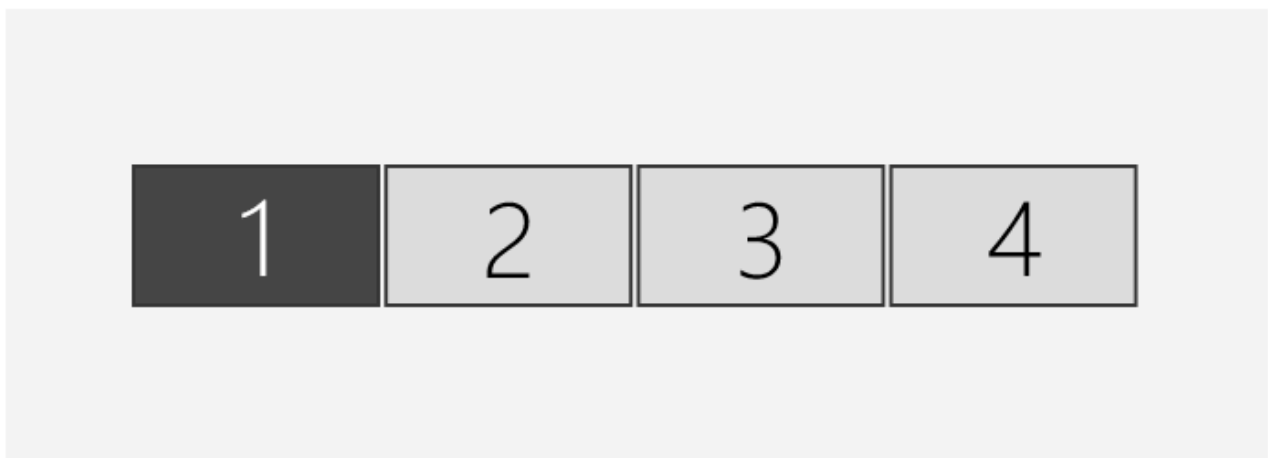
To access your screen settings, right click on your desktop and choose "Display Settings". To move your screens, select them with the left click and hold the left click to position them correctly. You can use the Videowall function on Yes for up to 18 screens.

- VIDEOWALL ON A HORIZONTAL LINE (GOOD)

Display

Rearrange your displays

Select a display below to change the settings for it. Press and hold (or select) a display, then drag to rearrange it.

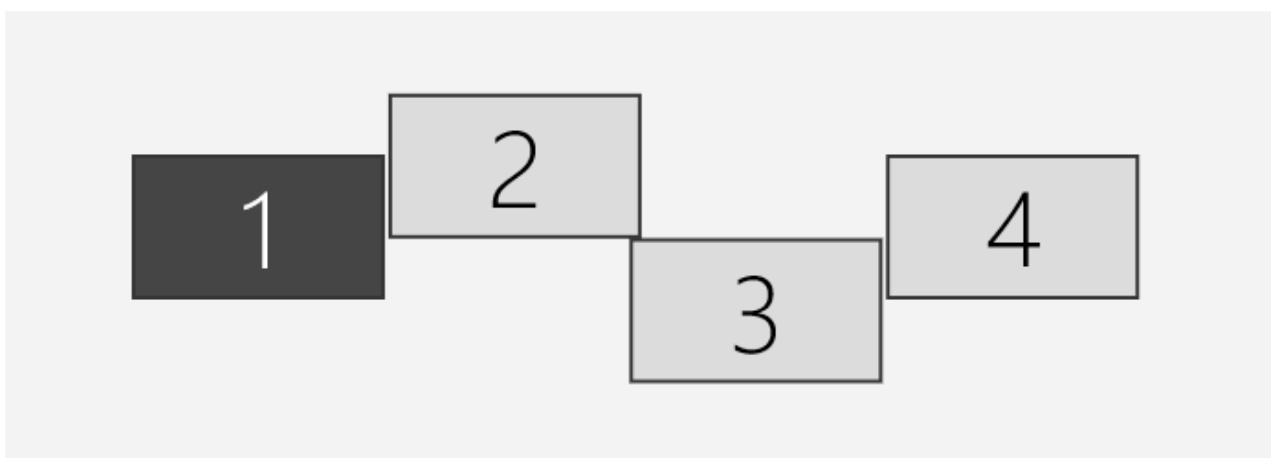


- (BAD)

Display

Rearrange your displays

Select a display below to change the settings for it. Press and hold (or select) a display, then drag to rearrange it.



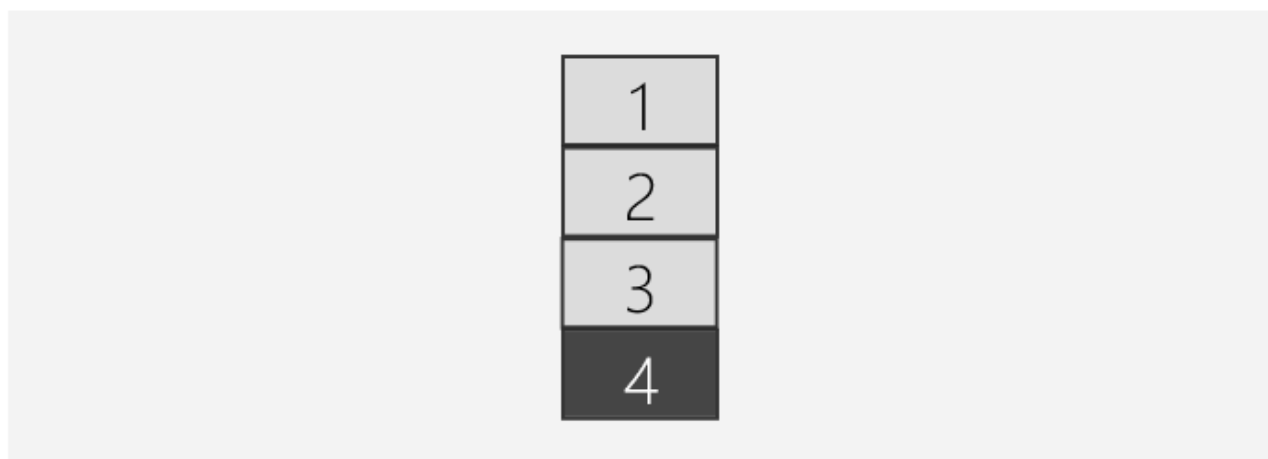
VIDEOWALL ON A VERTICAL LINE

GOOD:

Display

Rearrange your displays

Select a display below to change the settings for it. Press and hold (or select) a display, then drag to rearrange it.

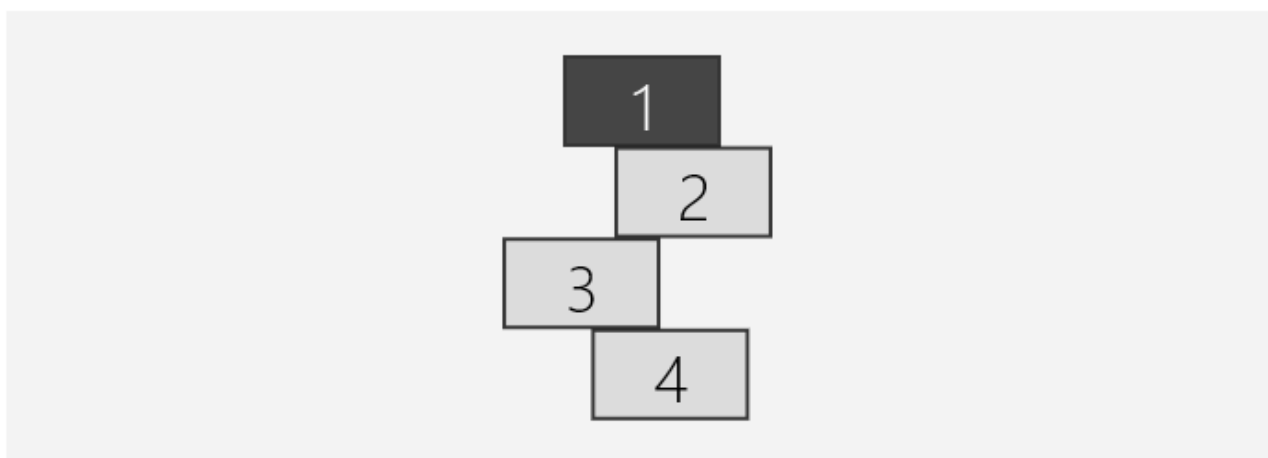


BAD:

Display

Rearrange your displays

Select a display below to change the settings for it. Press and hold (or select) a display, then drag to rearrange it.



How do I view my Excel files?

1. Download and install the ExcelViewer software [here](#)
2. In EMD, choose Software and then select your Excel file by clicking on the folder above the drop-down menu. Or you can use the online version of Excel (free with a Microsoft account) [here](#) using the url provided.

The screenshot shows a Microsoft Excel Viewer window displaying a 'TABLEAU DE BORD LOGISTIQUE' (Logistics Dashboard). The dashboard is organized into sections for 'FOURNISSEUR' (Supplier), 'ENTREPRISE (PRODUCTION)' (Company (Production)), and 'CLIENT' (Client). Each section contains various performance indicators and targets.

Overlaid on the Excel window is the 'EASY MULTI DISPLAY' setup window. The window title is 'EASY MULTI DISPLAY' and the main heading is 'SETUP YOUR DISPLAY 1'. It prompts the user to 'For each zone, enter the website URL or select media to display:'. The setup window includes a 'WEBSITE' field with a dropdown menu showing 'workhoveoffice.co.uk', a 'MEDIA' field with a dropdown menu showing 'SOFTWARE', and buttons for 'STOP DISPLAY', 'MEMORIZE ^', and 'STOP DISPLAY'. There are also navigation buttons for '< BACK', 'NEXT >', and '>'. The bottom of the setup window shows the support email 'support@easy-multi-display.com' and the version 'EMD V1.0.64'.

PERFORMANCE TESTEE	OBJECTIFS	INDICATEUR	CALCUL	CIBLE
FOURNISSEUR	Qualité de service	Santé financière	Mesurer la fiabilité du fournisseur et la régularité des flux matières en provenance des fournisseurs	Taux d'endettement / capitaux propres < 100%
	Délai de livraison			Taux de livraisons dans le délai / nbr livraison 98% (+/-1 %)
	Conformité de la livraison			Taux de livraisons conformes aux commandes / nbre de livraison totale 98% (+/-1 %)
ENTREPRISE (PRODUCTION)	Qualité des ressources organisationnelles de l'entreprise	Mobilisation du personnel	Mesurer l'implication humaine dans l'élaboration du projet	Taux de présence / total tps présence théorique 90% (+/-1 %)
	Qualité des moyens techniques	Fiabilité des équipements	Mesurer la fiabilité et la productivité des équipements engagés dans le process de production	Taux de rebuts / nbre produits non conformes / nbre produits totaux 98% (+/-1 %)
		Performances des équipements		Taux de rendement synthétique / temps ouverture de ligne / tps 98% (+/-1 %)
	Qualité du pilotage opérationnel	Stocks	Mesurer la performance des approvisionnements (pour les matières stratégiques et vitales à la production)	Taux de rotation des stocks / stocks / achats + charges externes 365 98% (+/-1 %)
CLIENT	Qualité du pilotage commercial	Conformité de la livraison	Mesurer la fiabilité et la conformité des produits livrés au client	Taux de retours produits / nbr de produits livrés 98% (+/-1 %)
	Parts de marché		Mesurer la satisfaction client	Nb de commandes, clients / evolution PDM gain = 5%

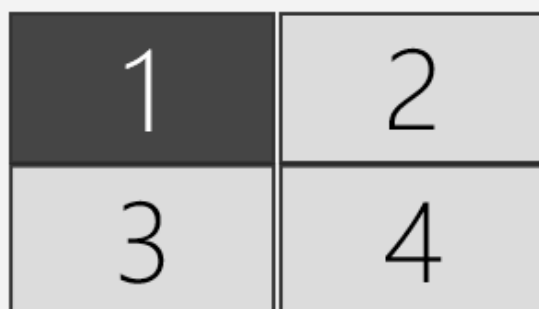
SQUARE OR RECTANGLE VIDEOWALL

GOOD:

Display

Rearrange your displays

Select a display below to change the settings for it. Press and hold (or select) a display, then drag to rearrange it.

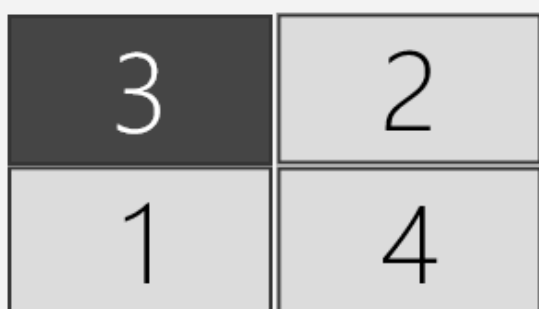


BAD (the order of the screens is not good):

Display

Rearrange your displays

Select a display below to change the settings for it. Press and hold (or select) a display, then drag to rearrange it.

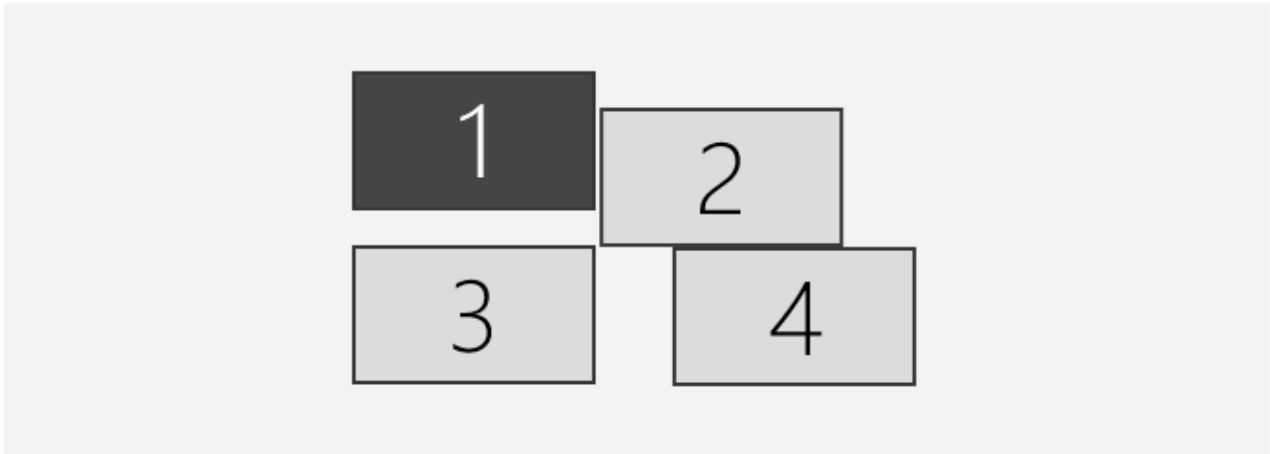


BAD (the alignment of the screens is not good):

Display

Rearrange your displays

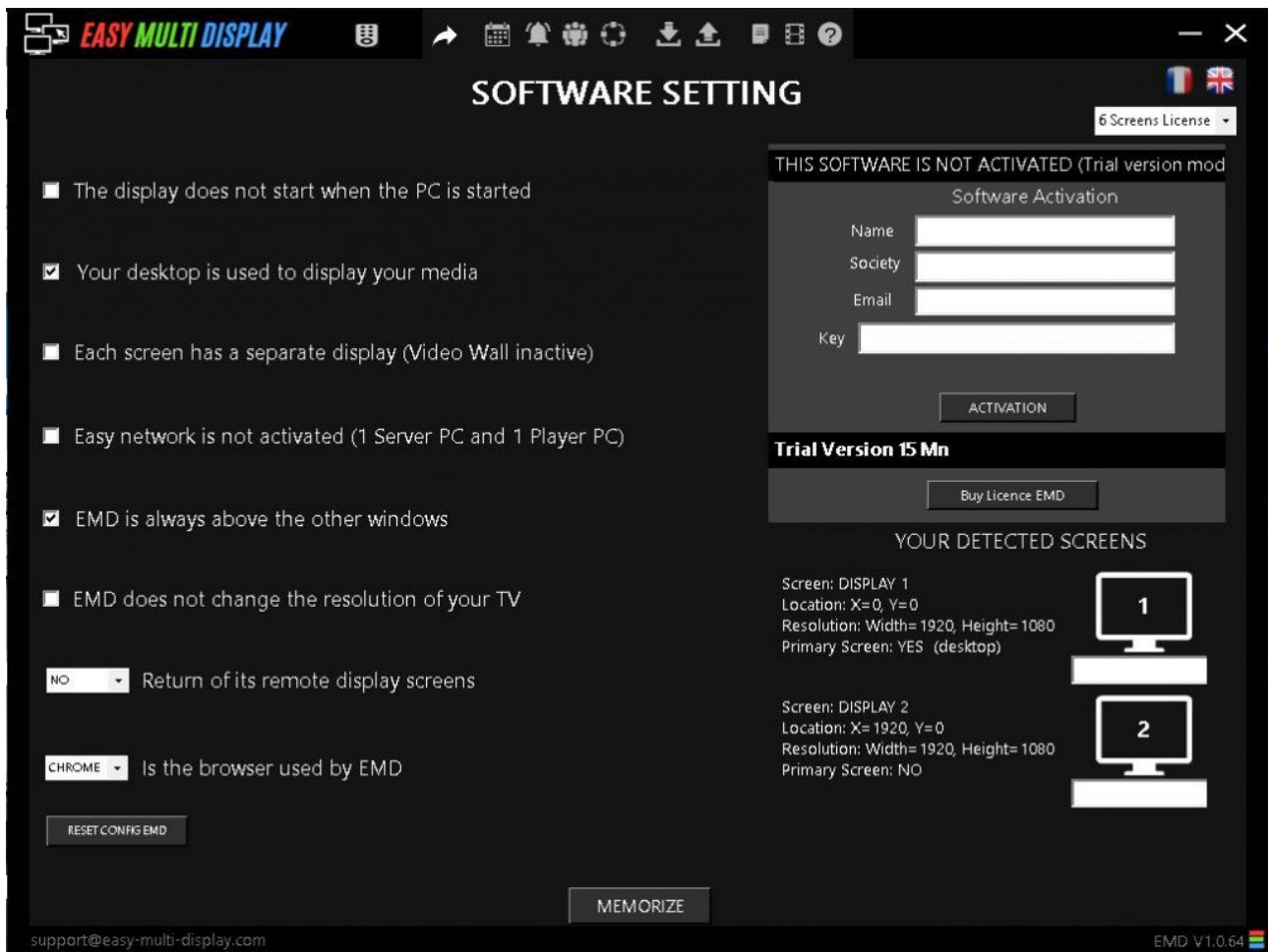
Select a display below to change the settings for it. Press and hold (or select) a display, then drag to rearrange it.



Problems encountered

Display problem not launched

If when you click Start Display on the different screens does not work, you can restore the default configuration by going to "Software Settings" and clicking the "Reset EMD Config" button. The default display configuration will be cleared and this should correct your problem.



Problem with YouTube stream files

April 2, 2021: Bug detected following YouTube update, contact us if you want a priority and temporary fix (This is related to the CNIL and RGPD which has published new rules from April 1, 2021).

Read here: <https://www.01net.com/actualites/cookies-pourquoi-les-boites-de-consentement-rgpd-de-vos-sites-preferes-ont-subitement-change-2040124.html>

To solve the problem, here are the instructions:

1. If vlc is still open, close it.
2. Download this file [here](#) and put it somewhere you can find it easily.
3. Next, press Windows key + R to open the Run command, then copy/paste the following text in bold font and press Enter: C: \ Program Files \ VideoLAN \ VLC \ lua \ playlist This will open the location where all the vlc .luac files are stored.
4. Drag and drop the youtube.luac file you created earlier and confirm that you want to overwrite the existing one.
5. Close File Explorer, then restart EMD and try to play the videos that produced the error before.

Thank you to the [VLC](#) media player team for their great responsiveness.

A workaround is to use [Dailymotion](#) or [Vimeo](#) and the following formats:

Input Media Stream:

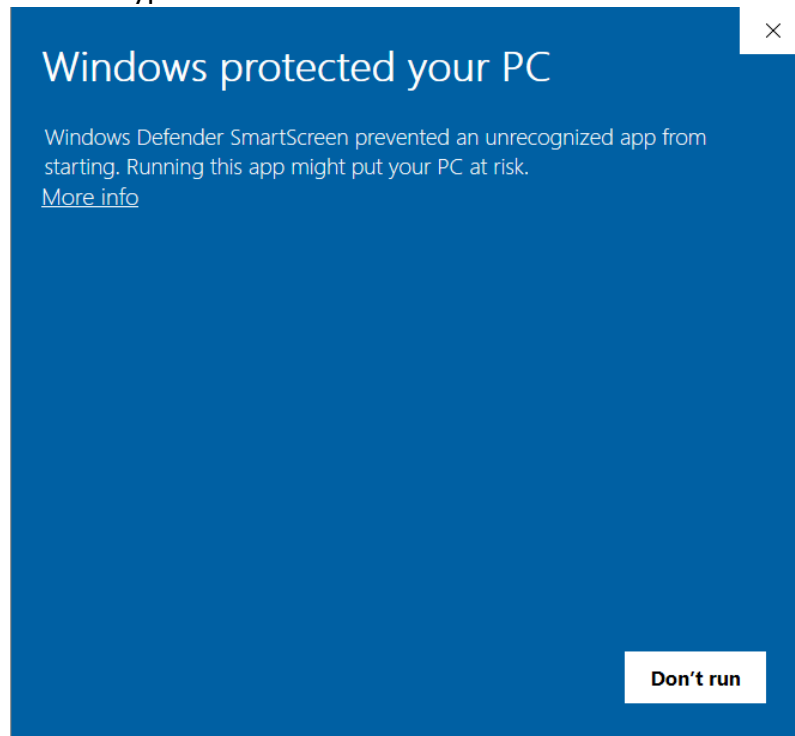
UDP / RTP unicast, UDP / RTP multicast, HTTP / FTP, MMS, TCP / RTP unicast, DCCP / RTP unicast, file.

Input formats:

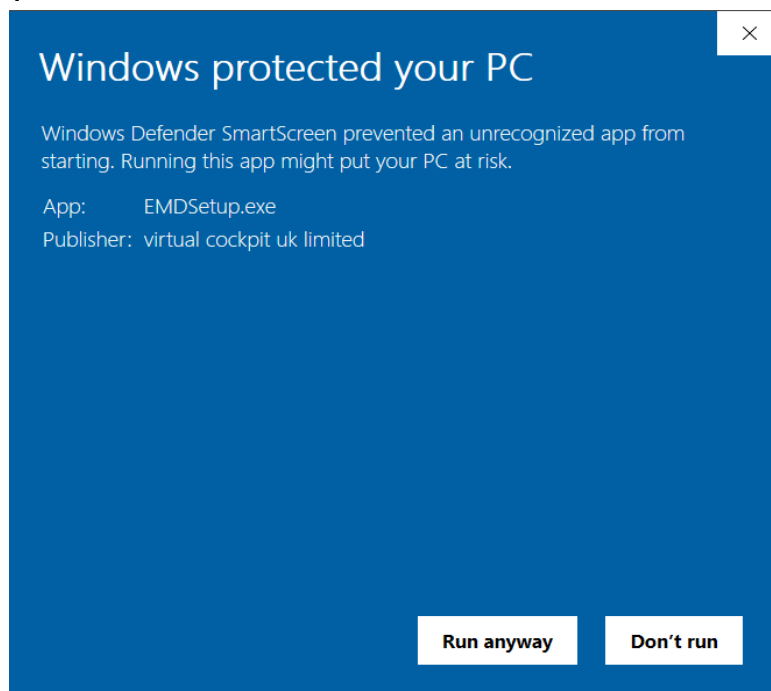
MPEG (ES, PS, TS, PVA, MP3), AVI, ASF / WMV / WMA, MP4 / MOV / 3GP, OGG / OGM / Annodex, Matroska (MKV), Real, WAV (including DTS), Raw Audio: DTS , AAC, AC3 / A52, Raw DV, FLAC, FLV (Flash), MXF, Nut, Standard MIDI / SMF, Creative TM Voice, JPG, PNG.

Problem during software installation

This software is certified free of viruses, spyware and Trojan horses. Temporarily suspend your antivirus software (at the time of installation) as some of them prevent the correct installation of the components necessary for the software to function. During installation if you have this type of window:



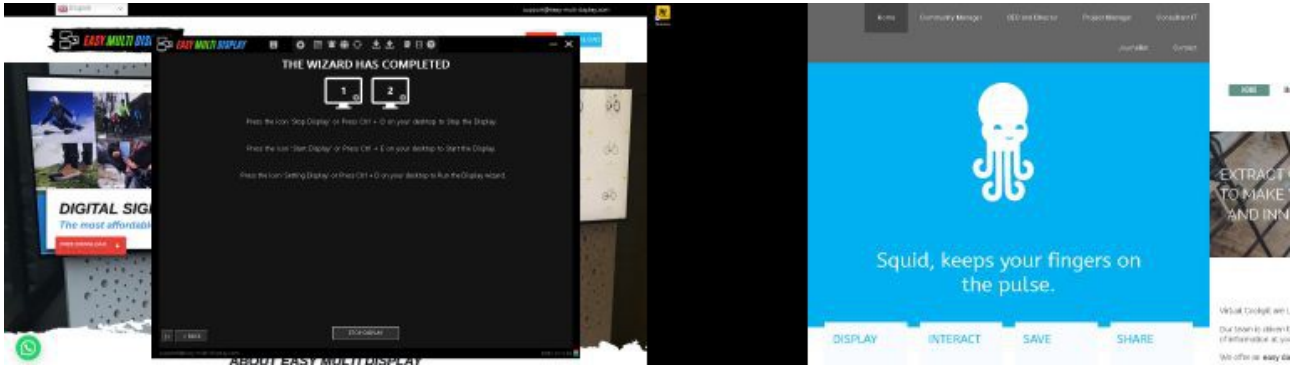
Click on "more info".



Then click on "run anyway".

Problem with the size or position of web pages (Windows desktop still visible after launching EMD)

Example of a display error :



Right click on the desktop, select "Display Settings" and check the scale and layout, it should be 100% for all screens and not 125% as in the screenshot below.

Scale and layout

Some apps won't respond to scaling changes until you close and reopen them.

Change the size of text, apps, and other items

125% (Recommended) ▼

Advanced scaling settings

Display resolution

1920 × 1080 (Recommended) ▼

Display orientation

Landscape ▼

Specify that 100% changes the size of text, applications and other elements such as this:

Scale and layout

Change the size of text, apps, and other items

100% ▼

Advanced scaling settings

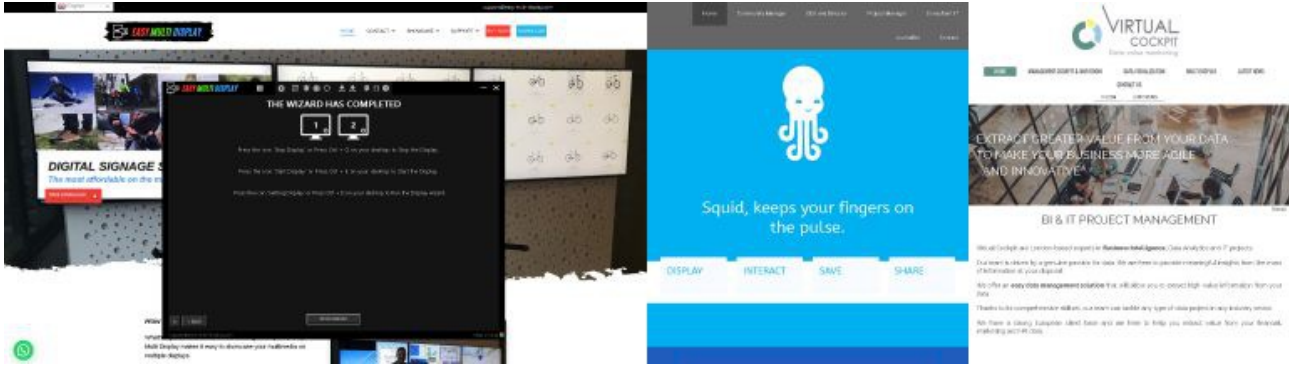
Display resolution

1920 × 1080 (Recommended) ▼

Display orientation

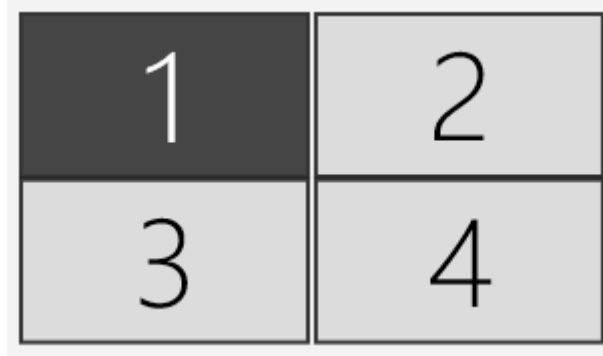
Landscape ▼

After adjustment:



Why is my media pixelated?

Example with a video wall composed of 4 screens in Full HD (1920 * 1080 resolution) for a final screen wall resolution of 4 K (3840 * 2160).



The result is a video that is too small (resolution too low ...):



Result with adapted video and resolution:



Solutions to the problem:

Either increase the resolution of your media.

Or you decrease the resolution of your screens.

If you encounter this kind of difficulty, it would be highly advisable to undergo training in the use of EMD (it will save you time and make you more efficient).

Customer service

If you have a problem, please contact Easy Multi Display's customer service department and you will be asked to provide the following information.

- Your version of Easy Multi Display.
- Clarification of your problem.
- Clarification of error messages.

Customer service contact details

Virtual Cockpit UK Ltd

Email: support@easy-multi-display.com

Web: www.easy-multi-display.com

71-75 Shelton Street,
Covent Garden London
WC2H 9JQ